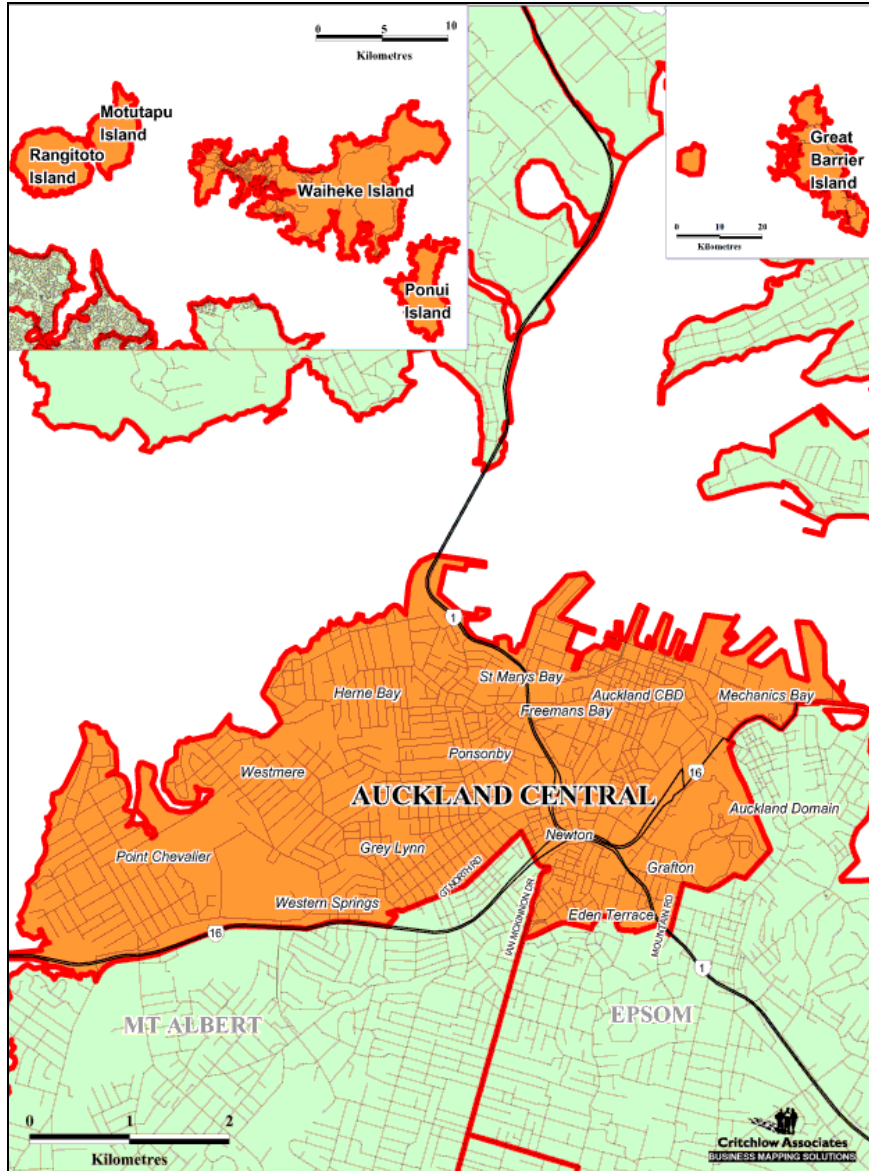


Electorate Profile

Auckland Central



Parliamentary Library

Te Pātaka Rangahau a Te Whare Pāremata

October 2005

Table of Contents

Electoral Profile

General Notes	3
Election Results	3
2005 Election Results	3
Voter Enrolment and Turnout 2002, 2005	4
2002 Election Results	4
1999 Election Results	5

Statistical Profile

Population Summary	6
Age Groups of the Usually Resident Population	6
Ethnic Groups of the Usually Resident Population	6
Birthplace of Usually Resident New Zealand Population	7
Birthplace and Years Since Arrival in New Zealand, for Overseas Born	7
Languages Spoken	7
Highest Qualifications	8
Personal Income	8
Income Support Received	8
Labour Force and Employment Status	9
Occupations of the Gainfully Employed	9
Industries of the Gainfully Employed	10
Family Type of Families in Private Dwellings	11
Family Income	11
Social Marital Status	11
Household Composition of Private Dwellings	12
Access to Telecommunications	12
Tenure of Dwellings	12
Business Locations and People Employed by Industry	13
Socio-Economic Status Decile of Schools	14
Ethnic Group of School Pupils	14
Deprivation Index of Areas within the Electorate	15

Maps

Population Change 1996-2001	16
Average Personal Income 2001	17

Glossary

18

Electoral Profile

General Notes

The Auckland Central electorate comprises the communities at the centre of Auckland City: the inner western suburbs from Freemans Bay around to Pt. Chevalier and the inner city suburbs of Grey Lynn and Ponsonby.

Of people aged 15 and over in the electorate, 23.2% had a Bachelors degree or higher, the third-highest proportion of 62 general electorates. Almost 27% of those aged 15 and over were married – the lowest proportion of all electorates, and far below the national average (45%).

Election Results

The winning candidate in the 2005 election, Judith Tizard (Labour Party), captured a plurality (43.89%) of the 35,985 valid electorate votes cast for candidates in the Auckland Central electorate. The seat was also held in 2002 by Judith Tizard (Labour Party) with a margin of 5,205. The Labour Party captured a plurality (45.24%) of the party votes in Auckland Central, up about 1.1 percentage points on its party vote share in 2002. Turnout (total votes cast as a proportion of enrolled electors) in 2005 was 82.42%.

2005 Election Results – Ranked by Electorate Vote

Winning Candidate: TIZARD, Judith (LAB) - Majority: 3884					
Electorate Votes			Party Votes		
Candidate	Valid Votes	Share (%)	Party	Valid Votes	Share (%)
TIZARD, Judith	15,794	43.89	Labour Party	16,639	45.24
WONG, Pansy	11,910	33.10	National Party	12,403	33.72
TÁNCZOS, Nándor	5,327	14.80	Green Party	4,775	12.98
BARAGWANATH, Susan	996	2.77	New Zealand First Party	1,044	2.84
SIMPSON, Helen	559	1.55	ACT New Zealand	658	1.79
TAYLOR, Steve	461	1.28	United Future New Zealand	477	1.30
YATES, Bronwyn	330	0.92	Māori Party	223	0.61
TOWNSEND, Petronella	266	0.74	Jim Anderton's Progressive	297	0.81
VINCENT, Maureen	150	0.42	Destiny New Zealand	80	0.22
FORDE, Thomas	91	0.25			
RUPA, Dilip	69	0.19	Direct Democracy Party	15	0.04
CANDY, Alan Field	32	0.09			
			Aotearoa Legalise Cannabis Party	61	0.17
			Christian Heritage NZ	29	0.08
			Libertarianz	25	0.07
			Alliance	19	0.05
			NZ Family Rights Protection Party	13	0.04
			Democrats for Social Credit	10	0.03
			99 MP Party	5	0.01
			OneNZ Party	5	0.014
			The Republic of NZ Party	3	0.01
Total Valid Votes	35,985	100.00		36,781	100.00
Total Votes Cast	36,277			36,896	

Voter Enrolment and Turnout 2002, 2005

	Auckland Central		NZ	
	2002		2005	
Voting Age Population (VAP) *	46,740	2,816,040	67,300	2,990,300
Electors on General Roll (EGR)	40,331	2,475,916	45,159	2,639,393
Electors on Maori Roll	1,802	194,114	1,907	208,003
Total Enrolled **	42,133	2,670,030	47,066	2,847,396
Total Votes Cast by EGR (TVC)	32,018	1,943,659	37,218	2,164,495
% VAP Enrolled	90.1%	94.8%	69.9%	95.2%
Turnout (TVC as % EGR)	79.4%	78.5%	82.4%	82.0%

* Estimated population statistics as at: June 2001; June 2005.

** Enrolment statistics as at: July 2002; 17 September 2005.

2002 Election Results – Ranked by Electorate Vote

Winning Candidate: TIZARD, Judith Ngaire - majority 5205					
Electorate Votes			Party Votes		
Candidate	Valid Votes	Share (%)	Party	Valid Votes	Share (%)
TIZARD, Judith Ngaire	13,298	43.33	Labour Party	13,929	44.10
WONG, Pansy	8,093	26.37	National Party	4,748	15.03
TÁNCZOS, Nándor	6,212	20.24	Green Party	4,990	15.80
BELTOWSKI, Lech Andrew	1,223	3.98	ACT	3,358	10.63
TAYLOR, Stephen	770	2.51	United Future	1,266	4.01
TREEN, Michael	365	1.19	Alliance	513	1.62
SHEPHERD, Vivienne	333	1.08	Progressive Coalition	468	1.48
REYNOLDS, Sean	235	0.77	Christian Heritage	163	0.52
HEAD, Neil Graham	97	0.32	Independent		
VAN DEN HEUVEL, Anthony Joseph	66		Human Rights		
			NZ First	1,809	5.73
			Legalise Cannabis	164	0.52
			Outdoor Rec. NZ	137	0.43
			Mana Maori	20	0.06
			OneNZ Party	15	0.0475
			NMP	3	0.01
Total Valid Votes	30,692	100.00		31,583	100.00
Total Votes Cast	31,049			31,672	

1999 Election Results

TIZARD, Judith Ngaire - Labour Party *majority* 5,285

Electorate Candidate	Party	Valid Votes	
CAMPBELL, Gerry	South Island Party	43	0.13%
COGGAN, Terence John	Communist League	38	0.12%
de JONGE, Pieter	Blokes Liberation Front	169	0.52%
HOLLAND, Dick	Christian Heritage Party	435	1.33%
HUATA, Donna Awatere	ACT New Zealand	2301	7.05%
ITI, Tame	Mana Maori Movement	83	0.25%
LEE, Sandra	Alliance	6129	18.78%
POULSEN, Martin	National Party	7360	22.55%
RUPA, Dilip	New Zealand First Party	380	1.16%
TÁNCZOS, Nándor	Green Party	3057	9.37%
TIZARD, Judith Ngaire	Labour Party	12645	38.74%

Electorate Party for Auckland Central	Valid Votes	
ACT New Zealand	2929	8.91%
Alliance	2321	7.06%
Green Party	4235	12.88%
Labour Party	13647	41.50%
National Party	7747	23.56%
New Zealand First Party	671	2.04%
United NZ	130	0.40%
Unsuccessful Parties	1205	3.66%

Statistical Profile

Age Group	Auckland Central			New Zealand
	Number	%	Rank *	%
under 5 yrs	2,976	5.2	5	7.2
5-14 yrs	5,154	9.1	2	15.4
15-19 yrs	3,537	6.2	12	7.1
20-29 yrs	13,221	23.3	61	13.0
30-49 yrs	19,614	34.6	61	29.8
50-64 yrs	7,347	13.0	8	15.3
65 yrs and over	4,869	8.6	10	12.1
Total	56,718	100.0		100.0
Mean Age (years)	34.3		27	35.8
	Number	%		%
Total 18 years and over	47,121	83.1		73.0
Total Males	28,176	49.7		48.8
Total Females	28,542	50.3		51.2

Ethnic Groups of the Usually Resident Population

Ethnic Group (total responses)	Auckland Central			New Zealand
	Number	%	Rank *	%
European	41,421	73.0	18	76.8
NZ Maori	4,554	8.0	20	14.1
Pacific Island	4,971	8.8	51	6.2
Asian	6,123	10.8	48	6.4
Other	573	1.0	46	0.7
Not Specified	3,780	6.7		4.0
Total**	61,422	108.3		108.2

* Rank 1 (low) to 62 (high) among general electorates. Ranks are of % in each group. Some totals may differ due to rounding. Electorates are compiled from Meshblocks, each of whose data is rounded to a multiple of 3 (to protect confidentiality).

** The sum of numbers in each ethnic group is greater than the total population because people with more than one ethnicity are counted in each group they belong to. Prepared in the Parliamentary Library from Statistics New Zealand 2001 Census data.

Birthplace of Usually Resident New Zealand Population

	Auckland Central			New Zealand
	Number	%	Rank*	%
New Zealand	36,939	65.3	12	77.4
Overseas	16,071	28.4	49	18.7
Not Specified	3,579	6.3		4.0
Total Usually Resident Population	56,589	100.0		100.0

Birthplace and Years Since Arrival in New Zealand, for Overseas Born

	Auckland Central			New Zealand
	Number	%	Rank*	%
<u>UK and Ireland</u>				
0 and under 5 Years	822	5.1	49	3.5
5 and under 10 Years	339	2.1	18	2.2
10 and under 20 Years	510	3.2	17	3.3
20 Years and over	2,466	15.3	10	22.1
Total UK and Ireland	4,413	27.4	13	32.2
<u>Pacific Islands</u>				
0 and under 5 Years	315	2.0	40	3.5
5 and under 10 Years	117	0.7	32	1.6
10 and under 20 Years	399	2.5	40	4.7
20 Years and over	1,146	7.1	53	5.1
Total Pacific Islands	2,268	14.1	46	16.9
<u>North East Asia ⁽¹⁾</u>				
0 and under 5 Years	1,812	11.2	54	6.3
5 and under 10 Years	672	4.2	46	3.7
10 and under 20 Years	162	1.0	34	1.5
20 Years and over	75	0.5	25	0.6
Total North East Asia	2,994	18.6	52	12.8
<u>Total Overseas Born</u>				
0 and under 5 Years	5,331	33.1	53	26.0
5 and under 10 Years	1,962	12.2	33	13.8
10 and under 20 Years	2,070	12.8	14	16.1
20 Years and over	5,286	32.8	15	38.5
Total Overseas Born	16,125	100.0		100.0

Languages spoken

	Auckland Central			New Zealand
	Number	%	Rank*	%
English Only	38,106	67.3	11	76.8
English and NZ Maori	1,113	2.0	27	3.5
NZ Maori Only	36	0.1	19	0.2
Maori, English and Other	414	0.7	50	0.6
Maori and Other	18	0.0	53	0.0
English and Other	9,900	17.5	48	10.8
Other language	921	1.6	44	1.5
No Language	948	1.7	12	2.0
Language Not Specified	5,157	9.1		4.6
Total	56,613	100.0		100.0

* Rank 1 (low) to 62 (high) among the General Electorates. Ranks are of % in each group.

Some totals may differ due to rounding. Electorates are compiled from Meshblocks, each of whose data is rounded to a multiple of 3 (to protect confidentiality).

(1) North East Asia includes China, Korea, Taiwan, Hong Kong, Japan.

Prepared in the Parliamentary Library from Statistics New Zealand 2001 Census data.

Highest Qualifications of the Population aged 15 years and over

	Auckland Central			New Zealand
	Number	%	Rank*	%
Higher Degree	3,591	7.4	60	3.2
Bachelor Degree	7,638	15.8	60	6.9
Advanced Vocational Qualification	4,068	8.4	53	7.2
Intermediate Vocational Qualification	549	1.1	2	1.9
Skilled Vocational Qualification	1,446	3.0	6	4.8
Basic Vocational Qualification	1,638	3.4	16	3.7
Higher School Qualification	4,359	9.0	56	5.4
Sixth Form Qualification	4,620	9.5	23	9.8
Fifth Form Qualification	3,975	8.2	2	13.5
Other NZ Secondary School Qual.	24	0.0	7	0.1
Overseas Secondary School Qual.	3,606	7.5	46	5.7
No Qualification	5,517	11.4	3	23.7
Highest Qualification Not Specified	7,368	15.2		14.1
Total	48,399	100.0		100.0

Personal Income of the Population aged 15 years and over

	Auckland Central			New Zealand
	Number	%	Rank*	%
Nil or loss	2,361	4.9	41	4.8
\$1 to \$5,000	3,318	6.8	1	8.3
\$5,001 to \$10,000	4,701	9.7	11	11.7
\$10,001 to \$15,000	4,881	10.0	7	13.7
\$15,001 to \$20,000	2,982	6.1	3	8.4
\$20,001 to \$25,000	2,595	5.3	3	7.2
\$25,001 to \$30,000	2,916	6.0	2	7.4
\$30,001 to \$40,000	5,217	10.7	32	10.8
\$40,001 to \$50,000	3,726	7.7	52	6.3
\$50,001 to \$70,000	4,098	8.4	59	5.7
\$70,001 to \$100,000	2,346	4.8	59	2.4
\$100,001 or More	2,397	4.9	57	2.2
Not Specified	7,044	14.5		11.1
Total	48,588	100.0		100.0
Average Personal Income	\$32,961		59	\$25,371

Income Support Received by those aged 15 years and over (total responses)

	Auckland Central			New Zealand
	Number	%	Rank*	%
ACC Regular Payments	402	0.8	6	1.5
National Superannuation	3,930	8.1	4	14.5
Other Superannuation	876	1.8	5	3.1
Community wage job seeker	3,108	6.4	35	6.2
Community wage sickness benefit	972	2.0	39	1.9
Domestic Purposes Benefit	996	2.0	8	3.7
Invalid's Benefit	822	1.7	14	2.3
Student Allowance	2,295	4.7	54	2.7
Other Government Benefits	1,299	2.7	6	3.8
Total Aged 15 years and over	48,588	100.0		100.0

* Rank 1 (low) to 62 (high) among general electorates. Ranks are of % in each group. Some totals may differ due to rounding. Electorates are compiled from Meshblocks, each of whose data is rounded to a multiple of 3 (to protect confidentiality). Prepared in the Parliamentary Library from Statistics New Zealand 2001 Census data.

Labour Force and Employment Status of the Population aged 15 years and over

	Auckland Central			New Zealand
	Number	%	Rank *	%
Full-time Employed	24,504	50.4	55	46.0
Part-time Employed	5,607	11.5	7	13.8
Unemployed	2,496	5.1	38	4.8
Total Labour Force	32,607	67.1	48	64.6
Not in Labour Force	13,398	27.6	9	32.3
Labour Force Status Not Specified	2,583	5.3		3.1
Total Aged 15 Years and over	48,588	100.0		100.0
Paid Employee	21,552	44.4	29	44.9
Employer	2,253	4.6	32	4.5
Self-Employed, Not Employing	4,680	9.6	54	7.4
Unpaid Worker in Family Business	390	0.8	26	1.4
Employment Status Not Specified	1,233	2.5		1.7
Total Gainfully Employed	30,108	62.0	43	59.8

Occupations of the Gainfully Employed aged 15 years and over

	Auckland Central			New Zealand
	Number	%	Rank *	%
Legislators and Administrators and Managers	5,598	18.6	59	12.5
Professionals	6,462	21.5	57	13.9
Technicians and Associate Professionals	5,244	17.4	62	11.0
Clerks	3,381	11.2	22	12.5
Service and Sales Workers	3,831	12.7	14	14.0
Agriculture and Fishery Workers	495	1.6	21	8.0
Trades Workers	1,524	5.1	3	8.4
Plant and Machine Operators and Assemblers	933	3.1	5	8.3
Elementary Occupations	903	3.0	10	5.8
Not Specified	1,737	5.8		5.5
Total	30,108	100.0		100.0

* Rank 1 (low) to 62 (high) among the General Electorates. Ranks are of % in each group. Some totals may differ due to rounding. Electorates are compiled from Meshblocks, each of whose data is rounded to a multiple of 3 (to protect confidentiality).

Prepared in the Parliamentary Library from Statistics New Zealand 2001 Census data.

Industries of the Gainfully Employed aged 15 years and over

	Auckland Central			New Zealand
	Number	%	Rank*	%
Agriculture, Forestry and Fishing	294	1.0	19	8.3
Mining	18	0.1	21	0.2
Manufacturing	2,250	7.5	5	13.0
Electricity, Gas and Water Supply	57	0.2	7	0.3
Construction	1,167	3.9	3	6.0
Wholesale Trade	1,863	6.2	38	5.8
Retail Trade	2,778	9.2	3	12.1
Accommodation, Cafes and Restaurants	2,052	6.8	55	4.7
Transport and Storage	1,092	3.6	25	3.8
Communication Services	639	2.1	55	1.3
Finance and Insurance	1,317	4.4	52	3.0
Property and Business Services	6,414	21.3	60	11.3
Government Administration and Defence	750	2.5	27	3.5
Education	2,250	7.5	39	7.3
Health and Community Services	1,947	6.5	9	8.1
Cultural and Recreational Services	2,046	6.8	62	2.4
Personal and other Services	1,143	3.8	32	3.7
Not Specified	2,031	6.7		5.3
Total	30,111	100.0		100.0

* Rank 1 (low) to 62 (high) among general electorates. Ranks are of % in each group. Some totals may differ due to rounding. Electorates are compiled from Meshblocks, each of whose data is rounded to a multiple of 3 (to protect confidentiality).

Prepared in the Parliamentary Library from Statistics New Zealand 2001 Census data.

Family Type of Families in Private Dwellings

	Auckland Central			New Zealand
	Number	%	Rank *	%
Couple Only	5,595	47.9	58	39.0
Two Parent Family	3,921	33.6	2	42.1
One Parent Family	2,154	18.5	28	18.9
Total	11,670	100.0		100.0

Family Income

	Auckland Central			New Zealand
	Number	%	Rank *	%
Loss or Zero	117	1.0	47	0.7
1 to 5000	114	1.0	21	1.2
5001 to 10000	93	0.8	10	1.3
10001 to 15000	405	3.5	23	4.0
15001 to 20000	570	4.9	7	7.0
20001 to 25000	375	3.2	11	4.2
25001 to 30000	597	5.1	4	8.7
30001 to 40000	753	6.5	4	9.0
40001 to 50000	816	7.0	4	9.7
50001 to 70000	1,608	13.8	7	16.2
70001 to 100000	1,587	13.6	50	11.0
100001 or More	2,931	25.2	59	10.9
Income Not Specified	1,677	14.4		16.1
Total Families	11,643	100.0		100.0
Average Family Income	\$71,441		58	\$54,224

Social Marital Status of People Aged 15 years and over

	Auckland Central			New Zealand
	Number	%	Rank *	%
Married	12,954	26.7	1	45.2
Other partnerships	7,746	15.9	62	11.6
Total Partnerships	20,700	42.6	2	56.9
Non Partnered	22,335	46.0	59	36.7
Social Marital Not Specified	5,553	11.4		6.4
Total Aged 15 Years and over	48,588	100.0		100.0

* Rank 1 (low) to 62 (high) among the General Electorates. Ranks are of % in each group.

Some totals may differ due to rounding. Electorates are compiled from Meshblocks, each of whose data is rounded to a multiple of 3 (to protect confidentiality).

Prepared in the Parliamentary Library from Statistics New Zealand 2001 Census data.

Household Composition of Private Dwellings

	Auckland Central			New Zealand
	Number	%	Rank *	%
One Family	11,064	50.5	1	67.6
Two Families	345	1.6	30	2.0
Three or More Families	24	0.1	43	0.1
Non-Family Household	3,057	13.9	60	5.2
One Person Household	6,624	30.2	61	22.9
Not Available	810	3.7		2.1
Total Households	21,924	100.0		100.0

Access to Telecommunications

	Auckland Central			New Zealand
	Number	%	Rank *	%
Access to a Telephone	19,512	89.0	9	92.3
Access to a Fax Machine	5,907	26.9	44	24.2
Access to the Internet	9,882	45.1	52	35.9
No Access to Telecommunications Systems	675	3.1	28	3.5
Access to Telecommunications Not Specified	1,671	7.6		4.1
Total Households	21,924	100.0		100.0

Tenure of Dwellings

	Auckland Central			New Zealand
	Number	%	Rank *	%
Owned, With or Without Mortgage	10,419	47.5	2	64.6
Not Owned	9,780	44.6	59	30.7
of which Paying Rent to Private Sector Landlord	6,393	29.2	60	18.7
of which Paying Rent to Other Landlord	1,605	7.3	44	6.4
of which Paying Rent, Landlord Sector unknown	924	4.2		1.6
Tenure Not Specified	1,674	7.6		4.7
Total Households	21,924	100.0		100.0

* Rank 1 (low) to 62 (high) among general electorates. Ranks are of % in each group. Some totals may differ due to rounding. Electorates are compiled from Meshblocks, each of whose data is rounded to a multiple of 3 (to protect confidentiality). Prepared in the Parliamentary Library from Statistics New Zealand 2001 Census data.

**Business Locations and People Employed by Industry at February 2004
in the Approximate Electorate Area**

	Auckland Central	
	Number of business locations	Number of people employed
Agriculture	121	340
Services to Agriculture; Hunting and Trapping	13	3
Forestry and Logging	32	75
Commercial Fishing	43	35
Coal Mining	2	0
Oil and Gas Extraction	2	0
Metal Ore Mining	1	0
Other Mining	3	9
Services to Mining	11	6
Food, Beverage and Tobacco	36	370
Textile, Clothing, Footwear and Leather Manufacturing	99	740
Wood and Paper Product Manufacturing	13	15
Printing, Publishing and Recorded Media	189	2,260
Petroleum, Coal, Chemical and Associated Product Manufacturing	14	110
Non-Metallic Mineral Product Manufacturing	10	20
Metal Product Manufacturing	32	320
Machinery and Equipment Manufacturing	106	620
Other Manufacturing	88	310
Electricity and Gas Supply	8	70
Water Supply, Sewerage and Drainage Services	1	3
General Construction	278	760
Construction Trade Services	388	1,040
Basic Material Wholesaling	91	550
Machinery and Motor Vehicle Wholesaling	290	2,900
Personal and Household Good Wholesaling	525	2,260
Food Retailing	433	2,160
Personal and Household Good Retailing	963	4,380
Motor Vehicle Retailing and Services	226	790
Accommodation, Cafes and Restaurants	852	9,190
Road Transport	103	710
Rail Transport	4	80
Water Transport	50	660
Air and Space Transport	42	1,640
Other Transport	0	0
Services to Transport	362	2,860
Storage	12	25
Communication Services	127	4,320
Finance	1,197	4,690
Insurance	195	2,310
Services to Finance and Insurance	517	2,820
Property Services	3,627	1,800
Business Services	4,221	28,190
Government Administration	88	4,020
Defence	4	270
Education	287	8,270
Health Services	442	6,940
Community Services	101	1,200
Motion Picture, Radio and Television Services	423	2,450
Libraries, Museums and the Arts	463	1,180
Sport and Recreation	193	2,300
Personal Services	419	910
Other Services	297	2,430
Private Households Employing Staff	0	0
Total	18,044	109,360

These data are for the approximate electorate, to the nearest census area unit.

Included: enterprises having annual GST sales of \$30,000+ or other indicator of economic significance.

Prepared in the Parliamentary Library from Statistics New Zealand Business Demographic data.

Socio-Economic Status Decile of Schools in the Electorate, July 2004

Decile	Number of Schools	Auckland Central			New Zealand	
		%	Number of Pupils	%	% of Schools	% of Pupils
1	3	10.3	133	1.2	10.4	7.6
2	1	3.4	64	0.6	9.5	7.8
3	3	10.3	337	3.1	9.3	8.0
4	1	3.4	438	4.0	9.6	9.5
5	5	17.2	3,149	29.1	9.6	10.4
6	1	3.4	192	1.8	9.5	9.3
7	4	13.8	2,679	24.7	9.7	10.5
8	2	6.9	612	5.7	8.9	8.8
9	2	6.9	869	8.0	9.7	10.2
10	2	6.9	665	6.1	9.5	13.0
Not allocated	5	17.2	1,687	15.6	4.3	5.0
Total	29	100.0	10,825	100.0	100.0	100.0

Average school decile (weighted by number of pupils)

6.4

5.9

Decile 10 is the highest socio-economic status.

Ethnic Group or Foreign Fee Paying Status of School Pupils in the Electorate, July 2004

	Auckland Central		New Zealand
	Number of Pupils	%	%
NZ European	5,313	49.1	59.2
NZ Maori	1,368	12.6	20.9
Pacific Peoples	1,734	16.0	8.5
Asian	863	8.0	7.8
Other	142	1.3	1.7
Foreign Fee Paying	1,404	13.0	1.9
MFAT	1	0.0	0.0
Total	10,825	100.0	100.0

Prepared in the Parliamentary Library from Ministry of Education data.

**Deprivation Index for Census Area Units in the Electorate
Auckland Central**

Census Area Unit	Deprivation Index¹
Herne Bay	1
St Marys	3
Westmere	3
Army Bay	3
Parnell West	4
Ponsonby West	4
Ponsonby East	4
Freemans Bay	5
Newmarket	5
Grey Lynn West	5
Grey Lynn East	5
Auckland Harbourside	6
Eden Terrace	6
Point Chevalier East	6
Mt Eden North	6
Point Chevalier West	6
Newton	7
Surrey Crescent	8
Grafton West	8
Waiheke Island	8
Grafton East	8
Auckland Central West	9
Rosebank	9
Auckland Central East	10
Aiguilles Island	
Browns Island	
Cape Barrier	
Kaikoura and Rangiahua Islands	
Little Barrier Island	
Mokohinau Island	
Oceanic-Auckland Region East	
Rakitu Island	
Inlet-Waitemata Harbour	
Bays-Waiheke Island	
Great Barrier Island	
Inlet-Port Fitzroy	
Islands-Motutapu, Rangitoto, Rakino	
Tamaki Strait	

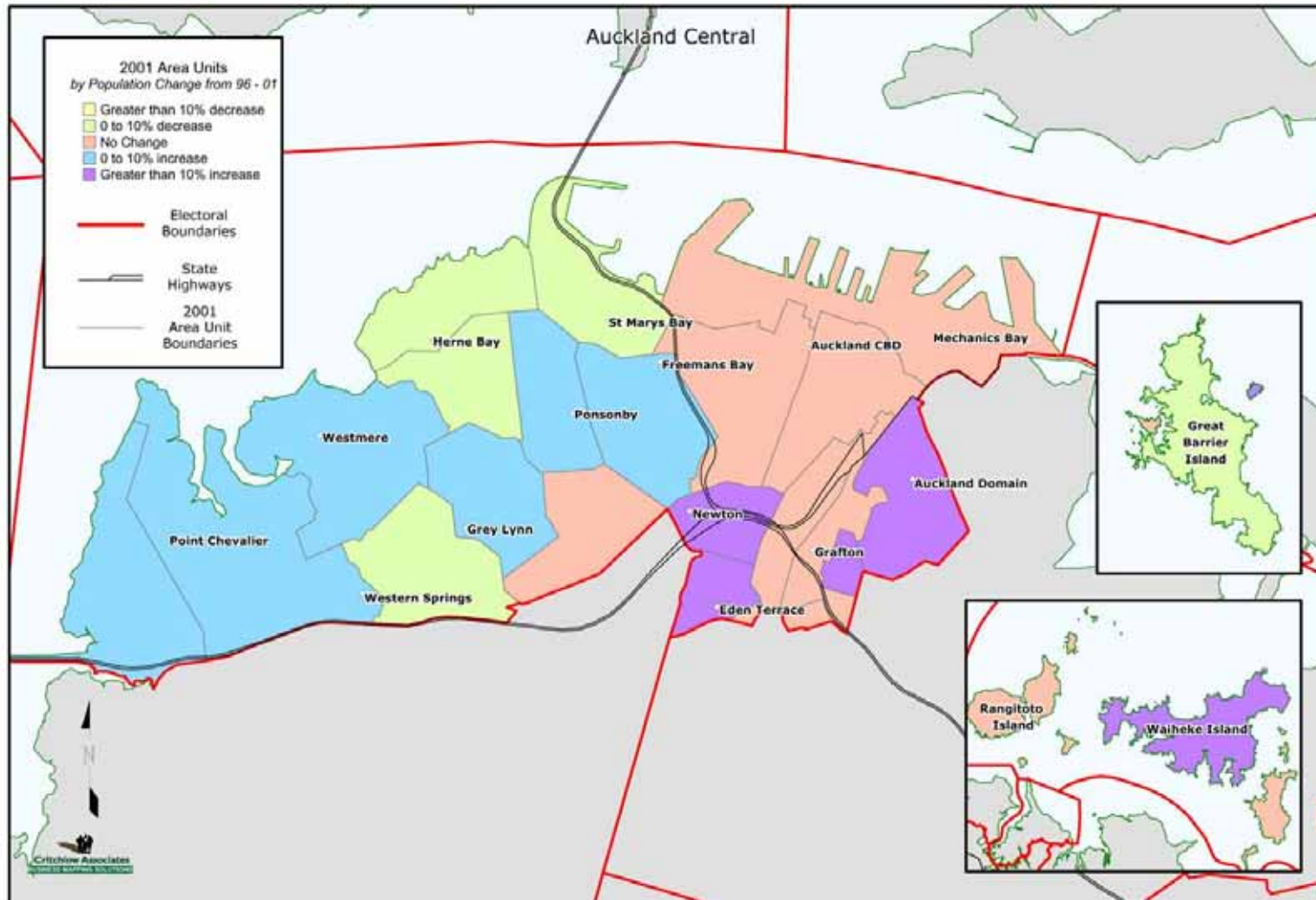
1. The Deprivation Index (a number from 1 to 10) is high for an area with a high degree of "deprivation", and is low for an affluent or less needy area. In New Zealand as a whole, small areas are evenly divided among the ten deciles. The deprivation index is calculated from such factors as proportions of people dependent on benefits, unemployed, and living in a single-parent family, and proportions of households with income below a certain threshold, with no access to a phone, and with no access to a car.

See Degrees of Deprivation in New Zealand: An Atlas of Socioeconomic Difference 2nd Edition, by Crampton, Salmond and Kirkpatrick.

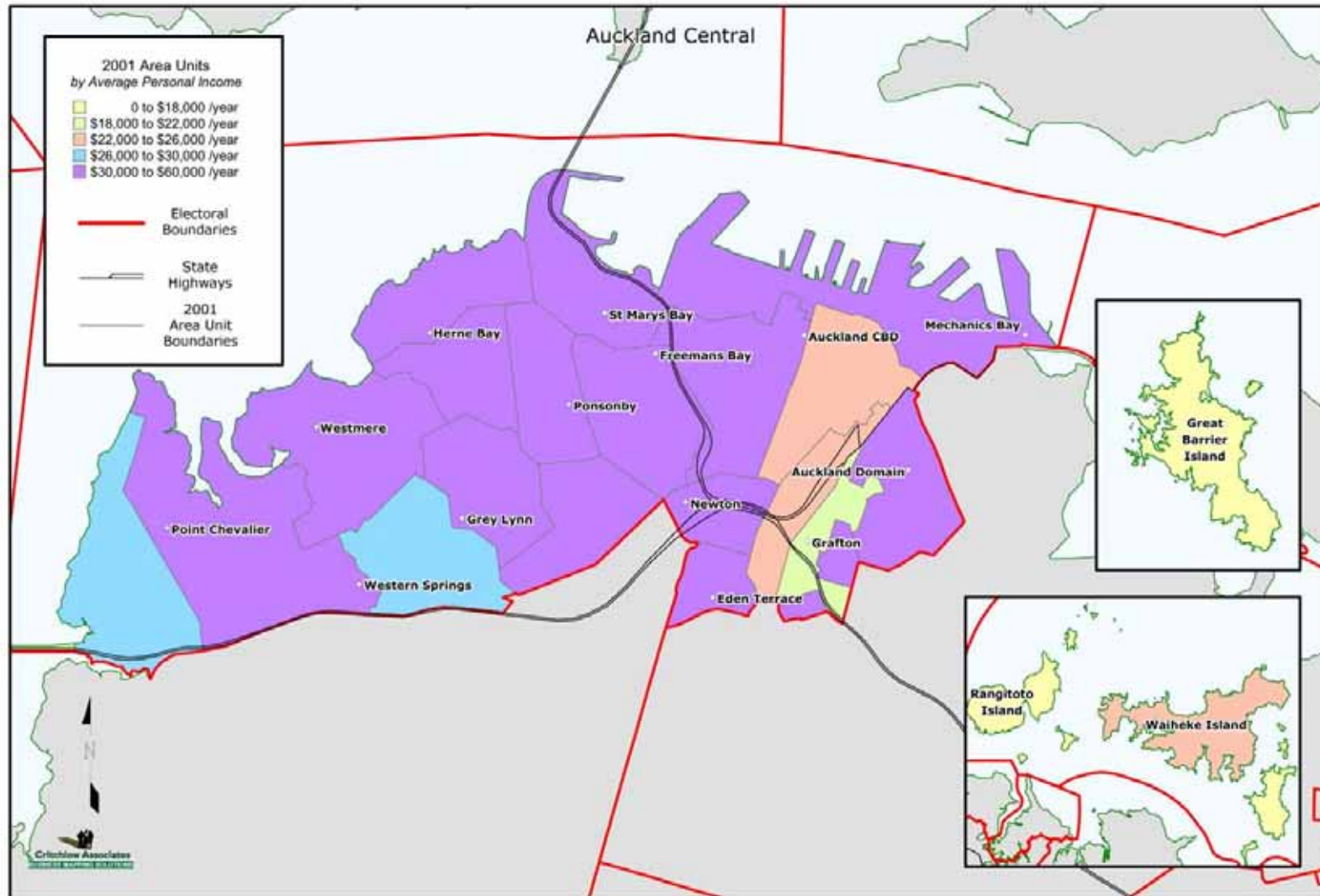
Prepared in the Parliamentary Library from Ministry of Health data.

Maps

Population Change 1996-2001



Average Personal Income 2001



Glossary

Term	Meaning
Area Unit	Area Units are aggregations of meshblocks. They are non-administrative areas intermediate between meshblocks and territorial authorities. Area units of main or secondary urban areas generally coincide with suburbs or parts thereof. Area units within urban areas normally contain 3,000-5,000 population though this can vary due to such things as industrial areas, port areas, rural areas and so on within the urban area boundaries. In rural areas, the straddling of some territorial authorities over regional boundaries has resulted in a number of area units having only 2 or 3 meshblocks and a very low population count. (Statistics New Zealand).
Average	The sum of a list of numbers, divided by the total number of numbers in the list. Also called arithmetic mean.
Census usually resident population	Population as calculated on census night, the latest census figures being as at March 2001. The census usually resident population count is all people counted in New Zealand on census night excluding overseas visitors and New Zealand residents temporarily overseas. At a sub-national level, the census usually resident population count refers to people who usually reside in a given subject area. The census usually resident population count is obtained by relocating people who are normally resident in an area of New Zealand, but who were enumerated elsewhere in New Zealand on census night, back to the meshblock of their usual address. For example, if a person usually lives in Christchurch but was in Wellington on census night, they will be included in the census usually resident population count for Christchurch and the census night population count for Wellington.
General electoral population	Total ordinarily resident population as shown in the census of population and dwellings, with the exception of the Maori electoral population.
Income	Includes income from all sources, including not only wages and salaries, but also other sources such as benefits, interest payments etc.
Maori electoral population	A figure representing both the persons registered as electors of the Maori electoral districts and a proportion of the persons of New Zealand Maori descent under the age of 18 years. The proportion is determined by dividing the total number of persons registered as electors of Maori electoral districts by the number of persons of New Zealand Maori descent registered.
Mean	The sum of a list of numbers, divided by the total number of numbers in the list. Also called arithmetic mean or average.
Median	Median is the "middle value" of a list. The smallest number such that at least half the numbers in the list are no greater than it. If the list has an odd number of entries, the median is the middle entry in the list after sorting the list into increasing order. If the list has an even number of entries, the median is equal to the sum of the two middle (after sorting) numbers divided by two.
Meshblock	The meshblock is the smallest geographic area used by Statistics New

Zealand in the collection and/or processing of data. The meshblock is thus the building block for aggregation into larger areas such as area units and urban areas.

Over time, the division of meshblocks and changes in population patterns have resulted in meshblock population counts having a considerable range. There are meshblocks with nil population and some with over 500 population. There are over 38,000 meshblocks across New Zealand. (Statistics New Zealand).

Quotas

The Electoral Act 1993 provides that the South Island has 16 General electoral districts. The General electoral population of the South Island is divided by 16 to give the South Island quota. The North Island General electoral population is then divided by the South Island quota to give the number of North Island General electoral districts. The North Island General electoral population is divided by the number of North Island General electorates to give the North Island quota. For the 2002 election, the South Island quota is 54,308 and the North Island quota is 54,288.

In a similar way, the Maori electoral population is divided by the South Island quota and rounded to give the number of Maori electoral districts. The Maori electoral quota is the Maori electoral population divided by the number of Maori electoral districts. For the 2002 election, the Maori quota is 53,130. For both General and Maori electoral districts the Commission may allow the electoral population to vary from quota by up to plus or minus 5%.

Total responses

Several census variables allow people to provide more than one response to the question. When a person has reported more than one response they will be counted in each group they reported. In output tables this is presented as 'total responses', for example, ethnic group (total responses). This means that the total population will be greater than the usual subject population for that variable, as individuals may be counted more than once.

Variables that may be output on the basis of total responses are:

- ethnic group
- language spoken
- iwi
- religious affiliation
- sources of personal income
- job search methods
- unpaid activities
- sources of family income
- sources of extended family income
- sources of household income
- fuel type used to heat dwellings
- access to telecommunication systems.

Multiple responses may also be reported as a combination of response categories. For example, for outputs of ethnic group, categories may include European/Maori, Maori/Pacific peoples, etc.

Copyright © NZ Parliamentary Library

Except for educational purposes permitted under the Copyright Act 1994, no part of this document may be reproduced or transmitted in any form or by any means, including information storage and retrieval systems, other than by Members of Parliament in the course of their official duties, without the consent of the Parliamentary Librarian, Parliament Buildings, Wellington, New Zealand.