



PARLIAMANTARY LIBRARY
Te Pātaka Rangahau a Te Whare Pāremata

Palmerston North

Electorate Profile

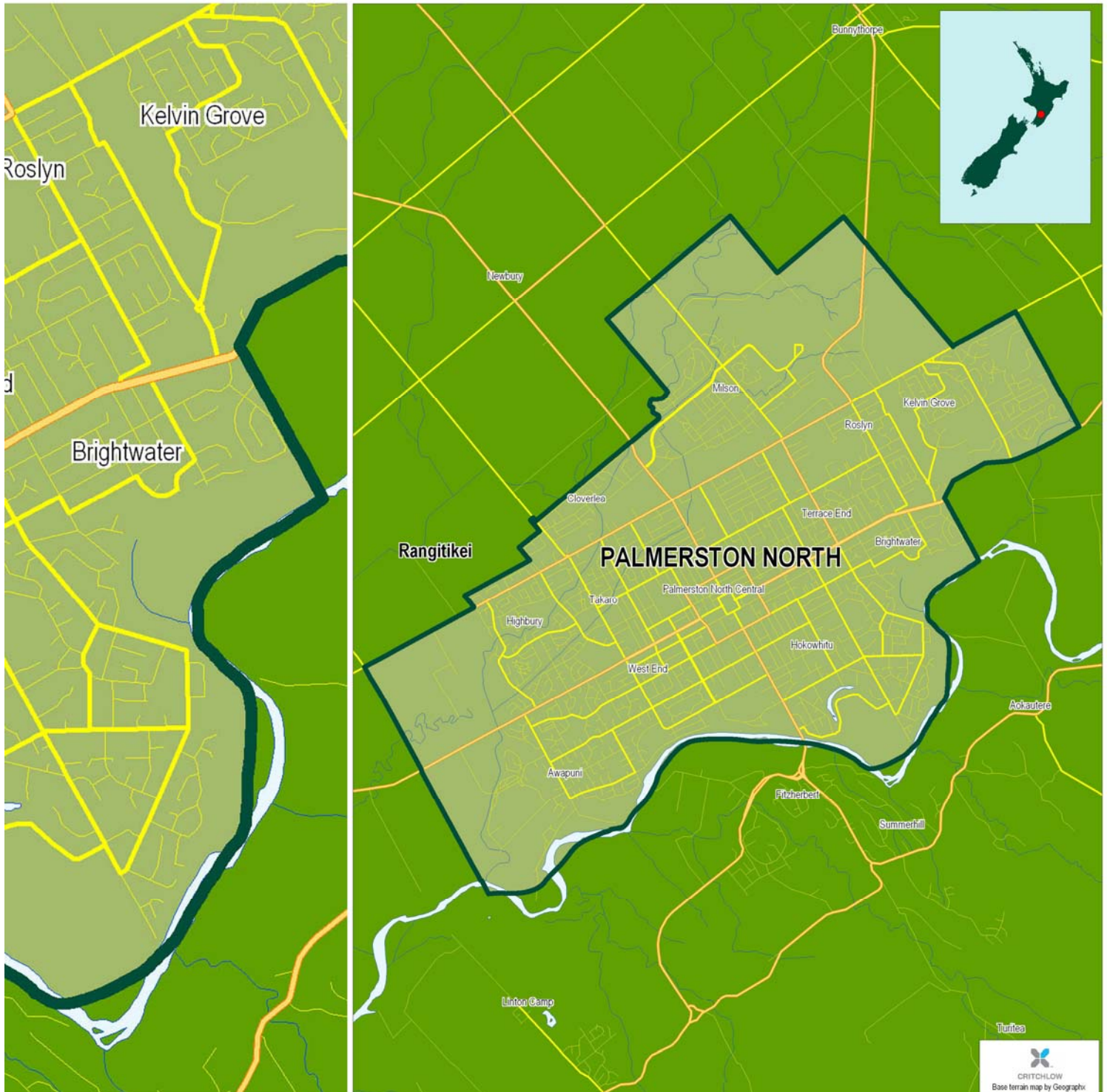


Table of Contents

Palmerston North: Electoral Profile	3
2008 Election Results (Electorate)	4
2008 Election Results - Party Vote	4
2005 Election Results (Electorate)	5
2005 Election Results - Party Vote	5
Voter Enrolment and Turnout 2005, 2008	6
Palmerston North: People	7
Population Summary	7
Age Groups of the Usually Resident Population	7
Ethnic Groups of the Usually Resident Population	7
Birthplace of Usually Resident New Zealand Population	8
Birthplace and Years Since Arrival in New Zealand, for Overseas Born	8
Languages Spoken	8
Highest Qualifications of the Population aged 15 years and over	9
Ethnic Group of School Pupils	9
Iwi Affiliations	10
Religious Affiliations	11
Palmerston North: Households	12
Family Type of Families in Private Dwellings	12
Family Income	12
Social Marital Status	12
Household Composition of Private Dwellings	12
Access to Telecommunications	13
Tenure of Dwellings	13
Socio-Economic Status Decile of Schools in the Electorate, July 2007	13
Index of Socioeconomic Deprivation for Areas within the Electorate	14
Index of Deprivation Map	15
Palmerston North: Work	16
Personal Income of the Population aged 15 years and over	16
Income Support Received by those aged 15 years and over	16
Labour Force and Employment Status of the Population aged 15 years and over	17
Occupations of the Gainfully Employed	17
Business Locations by Industry at February 2006	18
Industries of the Gainfully Employed	19
Glossary	20
Copyright - NZ Parliamentary Library	21

Palmerston North: Electoral Profile

General Notes

The Palmerston North electorate is now a wholly urban electorate centred on the city of Palmerston North. Its northern boundary has been extended to include Cloverlea, Milson, and Kelvin Grove. Its southern boundary is now the Manawatu River, thereby excluding the rural fringes of Linton, Massey University, and Aokautere.

Among general electorates in 2006, Palmerston North had the highest percentage of people affiliated with the Brethren denomination (1.3%). The proportions of those working in the retail trade industry (11.8%), and those working in the education and training sector (10.2%), were the second and third-highest in New Zealand respectively.

Election Results

The winning candidate in the 2008 election, Iain Lees-Galloway (Labour Party), captured a plurality (46.82%) of the 34,125 valid electorate votes cast for candidates in the Palmerston North electorate. The seat was held in 2005 by Steve Maharey (Labour Party) with a margin of 5,500. The Labour Party captured a plurality (40.68%) of the party votes in Palmerston North, down 4 percentage points on its party vote share in 2005. Turnout (total votes cast as a proportion of enrolled electors) in 2008 was 81.18%.

2008 Election Results (Electorate)

Candidate	Valid Votes	Share (%)
LEES-GALLOWAY, Iain (LAB)	15,977	46.82
PLIMMER, Malcolm (NAT)	14,860	43.55
O'HALLORAN, Lawrence (GP)	1,509	4.42
ODERING, Graham (NZF)	658	1.93
DITTMER, Kevin (ACT)	420	1.23
LUCAS, Debbie (JAP)	261	0.76
OWEN, Frank (UFNZ)	259	0.76
SETON, Grant (IND)	107	0.31
CHATHA, Arshad (IND)	74	0.22
Total Valid Votes	34,125	100.00
Total Votes Cast	34,466	101.00

Winning Candidate: LEES-GALLOWAY, Iain Francis - majority 1117

For interpretation of abbreviations, see Glossary.

2008 Election Results - Party Vote

Party	Valid Votes	Share (%)
Labour Party	14,108	40.68
National Party	14,103	40.66
Green Party	2,258	6.51
New Zealand First Party	1,404	4.05
ACT New Zealand	948	2.73
United Future	430	1.24
Jim Anderton's Progressive	408	1.18
The Bill and Ben Party	338	0.97
Māori Party	247	0.71
Aotearoa Legalise Cannabis Party	139	0.40
Kiwi Party	117	0.34
Family Party	89	0.26
New Zealand Pacific Party	37	0.11
Alliance	16	0.05
Libertarianz	16	0.05
Workers Party	12	0.03
Democrats for Social Credit	6	0.02
The Republic of New Zealand Party	4	0.01
RAM - Residents Action Movement	2	0.01
Total Valid Votes	34,682	100.00
Total Votes Cast	34,841	100.46

2005 Election Results (Electorate)

Candidate	Valid Votes	Share (%)
MAHAREY, Steven (LAB)	17,263	53.87
PLIMMER, Malcolm (NAT)	11,763	36.71
O'HALLORAN, Lawrence (GRE)	1,141	3.56
ODERING, Graham (NZF)	853	2.66
PEDERSEN, Garry (UF)	627	1.96
PATCHETT, Dawn (JAP)	251	0.78
CHATHA, Arshad (IND)	147	0.46
Total Valid Votes	32,045	100.00
Total Votes Cast	32,321	100.86

Winning Candidate: MAHAREY, Steven (LAB) - Majority: 5500

For interpretation of abbreviations, see Glossary.

2005 Election Results - Party Vote

Party	Valid Votes	Share (%)
Labour Party	14,642	44.98
National Party	11,943	36.69
Green Party	2,116	6.50
New Zealand First Party	1,673	5.14
United Future New Zealand	1,071	3.29
Jim Andertons Progressive	370	1.14
ACT New Zealand	285	0.88
Māori Party	161	0.49
Destiny New Zealand	116	0.36
Aotearoa Legalise Cannabis Party	59	0.18
Christian Heritage NZ	49	0.15
Libertarianz	18	0.06
Alliance	14	0.04
99 MP Party	10	0.03
OneNZ Party	7	0.02
Democrats for Social Credit	6	0.02
Direct Democracy Party	5	0.02
The Republic of NZ Party	4	0.01
NZ Family Rights Protection Party	2	0.01
Total Valid Votes	32,551	100.00
Total Votes Cast	32,656	100.32

Voter Enrolment and Turnout 2005, 2008

	Palmerston North	NZ	Palmerston North	NZ
	2005		2008	
Voting Age Population (VAP)*	47,900	2,990,300	50,800	3,138,000
Electors on General Roll (EGR)	39,798	2,639,393	43,205	2,761,093
Electors on Māori Roll	2,916	208,003	3,540	229,666
Total Enrolled**	42,714	2,847,396	46,745	2,990,759
Total Votes Cast by EGR (TVC)	32,792	2,164,495	35,073	2,233,146
% VAP Enrolled	89	95	92	95
Turnout (TVC as % EGR)	82	82	81	81

* Estimated population statistics as at: June 2005; June 2008; ** Enrolment statistics as at: September 2005; November 2008.

Palmerston North: People

Population Summary

	Numbers and Percent Change
Usually Resident Population 2006 Census	64,896
Usually Resident Population 2001 Census	63,237
Increase 2001-06	1,659
Percent Increase 2001-06	3
Percent Increase 2001-06, New Zealand	8

Age Groups of the Usually Resident Population

	Palmerston North			New Zealand
	Number	%	Rank *	%
Age 0-4 Years	4,380	6.7	34	6.8
Age 5-14 Years	8,712	13.4	49	14.7
Age 15-19 Years	5,544	8.5	9	7.5
Age 20-29 Years	11,547	17.8	8	12.7
Age 30-49 Years	17,424	26.8	57	29.4
Age 50-64 Years	9,390	14.5	49	16.5
Age 65 Years and Over	7,893	12.2	32	12.3
Total	64,896	100.0		100.0
Median Age (Years)	32		51	
Total 18 Years and Over	48,807	75.2		73.8
Total Males	30,966	47.7		48.8
Total Females	33,927	52.3		51.2

The median age for New Zealand as a whole is 35 years.

Ethnic Groups of the Usually Resident Population

	Palmerston North			New Zealand
	Number	%	Rank *	%
European	44,964	71.2	32	67.6
Māori	9,918	15.7	24	14.6
Pacific Peoples	2,538	4.0	24	6.9
Asian	4,644	7.4	30	9.2
Middle Eastern/Latin American/African	714	1.1	22	0.9
Other (incl New Zealander)	7,812	12.4	24	11.2
Total Specified	63,171	100.0		100.0
Not Elsewhere Indicated	1,725	2.7		4.3

People reporting themselves in more than one category have been counted in each, so the sum of responses in the table may be greater than the number of people responding.

Birthplace of Usually Resident New Zealand Population

	Palmerston North			New Zealand
	Number	%	Rank *	%
New Zealand	52,140	80.3	23	73.5
Overseas	10,617	16.4	36	21.8
Not Specified	2,136	3.3		4.7
Total	64,896	100.0		100.0

Birthplace and Years Since Arrival in New Zealand, for Overseas Born

	Palmerston North			New Zealand
	Number	%	Rank *	%
UK and Ireland				
under 5 Yrs	573	5.4	43	5.8
5 - 9 Yrs	177	1.7	49	2.2
10 - 19 Yrs	324	3.1	40	3.0
20 Yrs and over	1,851	17.4	36	16.8
Total UK and Ireland	2,997	28.2	40	28.6
Pacific Islands				
under 5 Yrs	258	2.4	19	3.3
5 - 9 Yrs	183	1.7	20	2.5
10 - 19 Yrs	201	1.9	23	3.5
20 Yrs and over	333	3.1	24	4.8
Total Pacific Islands	1,056	9.9	21	15.4
North East Asia ⁽¹⁾				
under 5 Yrs	1,077	10.1	14	7.3
5 - 9 Yrs	414	3.9	19	3.6
10 - 19 Yrs	300	2.8	18	3.3
20 Yrs and over	111	1.0	9	0.6
Total North-East Asia;	1,974	18.6	18	15.4
Overseas Born				
under 5 Yrs	3,636	34.3	18	30.9
5 - 9 Yrs	1,497	14.1	28	16.2
10 - 19 Yrs	1,614	15.2	31	17.0
20 Yrs and over	3,477	32.8	37	31.5
Total Overseas Born	10,614	100.0		100.0

⁽¹⁾ North East Asia includes China, Korea, Taiwan, Hong Kong, Japan.

Languages Spoken

	Palmerston North			New Zealand
	Number	%	Rank *	%
English	60,855	93.8	14	91.2
Māori	2,889	4.5	21	3.9
NZ Sign	615	0.9	2	0.6
Samoan	621	1.0	26	2.1
Other	6,546	10.1	29	12.6
None	1,203	1.9	29	1.9
Total People	64,893	100.0		100.0

People reporting themselves in more than one category have been counted in each, so the sum of responses in the table may be greater than the number of people responding.

Highest Qualifications of the Population aged 15 years and over

	Palmerston North			New Zealand
	Number	%	Rank *	%
No Qualification	11,388	22.0	39	22.4
Level 1 Certificate Gained at School	6,324	12.2	39	12.2
Level 2 Certificate Gained at School	4,506	8.7	23	8.3
Level 3 or 4 Certificate Gained at School	4,317	8.3	8	5.4
Overseas Secondary School Qualification	1,767	3.4	47	5.5
Level 1, 2 or 3 Certificate Gained Post-school	2,400	4.6	9	4.1
Level 4 Certificate Gained Post-school	4,455	8.6	40	9.1
Level 5 Diploma	1,761	3.4	35	3.5
Level 6 Diploma	2,409	4.7	44	5.0
Bachelor Degree and Level 7 Qualifications	5,280	10.2	23	10.0
Post-Graduate and Honours Degree	1,098	2.1	16	1.8
Masters Degree	1,197	2.3	19	1.9
Doctorate Degree	771	1.5	4	0.5
Not Specified	4,122	8.0	53	10.4
Total	51,801	100.0		100.0

Ethnic Group of School Pupils

	Palmerston North			New Zealand
	Number	%	Rank *	%
European	8,042	61.3	33	57.4
Māori	3,163	24.1	20	21.6
Pacific Peoples	620	4.7	30	9.3
Asian	796	6.1	29	8.3
Other	335	2.6	20	2.1
Overseas	164	1.3	26	1.4
Total Roll	13,120	100.0		100.0

Prepared from Ministry of Education data.

Iwi Affiliations

Iwi	Number
Ngāti Porou	1,488
Ngāpuhi	1,170
Ngāti Raukawa (Horowhenua/Manawatū)	1,113
Ngāti Tūwharetoa	858
Ngāi Tahu / Kāi Tahu	741
Ngāti Maniapoto	555
Te Ati Haunui-a-Pāpārangi	540
Tūhoe	519
Ngāti Kahungunu region unspecified	474
Ngāti Kahungunu ki Te Wairoa	426
Ngāti Raukawa region unspecified	402
Te Atiawa (Taranaki)	342
Waikato	321
Rangitāne (Manawatū)	306
Ngāti Ruanui	279
Ngāti Kahungunu ki Wairarapa	270
Te Arawa	225
Hapū Affiliated to More Than One Iwi	195
Ngāti Kahungunu ki Heretaunga	192
Ngāti Awa	171
Rangitāne region unspecified	168
Te Whānau-a-Apanui	162
Muaūpoko	162
Taranaki	144
Ngā Rauru	141
Ngāti Whātua	138
Ngāti Raukawa (Waikato)	138
Tainui	132
Ngāti Apa (Rangitīkei)	129
Whakatōhea	120

These are the top 30 Iwi for the Palmerston North electorate. People reporting themselves in more than one iwi have been counted in each, so the sum of responses in the table may be greater than the number of people.

Religious Affiliations

	Palmerston North			New Zealand
	Number	%	Rank *	%
Buddhist	684	1.1	33	1.4
Christian	33,543	54.8	25	54.2
- Anglican	9,204	15.0	32	14.8
- Baptist	936	1.5	25	1.5
- Brethren	807	1.3	1	0.5
- Catholic	8,259	13.5	29	13.6
- Christian (not further defined)	3,246	5.3	19	5.0
- Congregational/Reformed	219	0.4	21	0.4
- Jehovahs Witnesses	270	0.4	32	0.5
- Latter Day Saints	465	0.8	30	1.2
- Methodist	1,878	3.1	31	3.3
- Pentecostal	1,782	2.9	8	2.1
- Presbyterian	5,367	8.8	36	10.3
- Salvation Army	378	0.6	4	0.3
- Seventh Day Adventist	330	0.5	14	0.4
Hindu	579	0.9	28	1.7
Islam/Muslim	543	0.9	25	1.0
Judaism/Jewish	72	0.1	33	0.2
Māori Christian	864	1.4	25	1.8
- Ratana	708	1.2	25	1.4
- Ringatū	177	0.3	19	0.4
Spiritualism and New Age Religions	369	0.6	19	0.5
Other Religions	246	0.4	46	0.7
Residual Categories	7,506	12.3	46	14.3
No Religion	22,008	36.0	28	34.6
Total Specified	61,197	100.0		100.0

People reporting themselves in more than one category have been counted in each, so the sum of responses in the table may be greater than the number of people responding.

* Rank 1 (high) to 63 (low) among general electorates. Ranks are of % in each group. Some totals may differ due to rounding.

All tables prepared from Statistics New Zealand 2006 Census data, unless otherwise noted.

Palmerston North: Households

Family Type of Families in Private Dwellings

	Palmerston North			New Zealand	
	Number	%	Rank *	%	
Couple Only	6,603	40.1	32	39.9	
Two Parent Family	6,306	38.3	50	42.0	
One Parent Family	3,564	21.6	13	18.1	
Total	16,470	100.0		100.0	

Family Income

	Palmerston North			New Zealand	
	Number	%	Rank *	%	
Nil or Loss	63	0.4	57	0.7	
\$1-\$5,000	177	1.1	22	1.0	
\$5,001-\$10,000	186	1.1	21	1.0	
\$10,001-\$15,000	396	2.4	7	1.8	
\$15,001-\$20,000	690	4.2	19	3.7	
\$20,001-\$25,000	1,365	8.3	27	7.7	
\$25,001-\$30,000	621	3.8	17	3.3	
\$30,001-\$35,000	822	5.0	22	4.5	
\$35,001-\$40,000	834	5.1	10	4.4	
\$40,001-\$50,000	1,404	8.5	23	7.8	
\$50,001-\$70,000	2,856	17.3	19	15.9	
\$70,001-\$100,000	2,667	16.2	29	15.8	
\$100,001+	2,379	14.4	37	18.5	
Not Specified	2,007	12.2		13.9	
Total	16,470	100.0		100.0	
Median (\$)	54,700		36		

The median family income for New Zealand as a whole is \$59,000.

Social Marital Status

	Palmerston North			New Zealand	
	Number	%	Rank *	%	
Married	19,938	38.5	52	43.7	
Other Partnership	6,999	13.5	32	13.5	
Total Partnership	26,940	52.0	53	57.3	
Non-Partnered	22,290	43.0	6	36.2	
Not Stated	2,571	5.0		6.6	
Total	51,798	100.0		100.0	

Household Composition of Private Dwellings

	Palmerston North			New Zealand	
	Number	%	Rank *	%	
One Family	15,585	64.1	54	67.8	
Two Families	423	1.7	39	2.5	
Three or More Families	12	0.0	46	0.2	
Non-Family Household	2,043	8.4	8	5.0	
One Person Household	5,982	24.6	22	22.6	
Not Available	270	1.1		1.9	
Total Households	24,312	100.0		100.0	

Access to Telecommunications

	Palmerston North			New Zealand
	Number	%	Rank *	%
No Access	462	1.9	24	2.0
Cellphone	17,697	72.8	21	71.1
Telephone	21,396	88.0	34	87.8
Fax	4,065	16.7	59	24.9
Internet	14,103	58.0	30	58.0
Total Households	24,315	100.0		100.0

Households reporting more than one means of access to telecommunications have been counted in each stated category. Thus the sum of responses in the table will be greater than the number of households.

Tenure of Dwellings

	Palmerston North			New Zealand
	Number	%	Rank *	%
Owned	14,208	58.4	51	62.7
- mortgage	7,518	30.9	39	32.9
- no mortgage	6,105	25.1	42	27.1
- mortgage not specified	579	2.4	43	2.7
Not owned	8,946	36.8	10	31.1
- paying rent	8,202	33.7	10	26.7
- no rent	642	2.6	58	3.9
- rent not specified	102	0.4	36	0.4
Tenure not specified	1,158	4.8		6.2
Total households	24,312	100.0		100.0

Socio-Economic Status Decile of Schools in the Electorate, July 2007

Decile	Palmerston North				New Zealand	
	Number of Schools	%	Number of Pupils	%	% of Schools	% of Pupils
One	2	6.1	183	1.4	10.4	7.4
Two	1	3.0	208	1.6	9.7	7.5
Three	3	9.1	775	5.9	9.6	7.9
Four	2	6.1	647	4.9	9.9	9.6
Five	4	12.1	1,055	8.0	9.7	10.1
Six	5	15.2	1,829	13.9	9.5	9.5
Seven	4	12.1	1,714	13.1	9.9	10.7
Eight	2	6.1	1,059	8.1	9.1	9.3
Nine	5	15.2	4,137	31.5	9.8	10.4
Ten	5	15.2	1,513	11.5	10.0	14.6
Not allocated	0	0.0	0	0.0	2.3	3.0
Total	33	100.0	13,120	100.0	100.0	100.0

Decile Ten is the highest socio-economic status.

Prepared from Ministry of Education data.

Index of Socioeconomic Deprivation for Areas within the Electorate

Area Unit	Index of Deprivation 2006 (1)
Awapuni South	2
Hokowhitu Lagoon	2
Awapuni West	3
Hokowhitu West	4
Hokowhitu East	4
Milson	5
Kelvin Grove	5
Palmerston North Hospital	6
Terrace End	6
Takaro	7
Cloverlea	7
Papaeoia	8
Westbrook	8
West End	8
Roslyn	9
Palmerston North Central	9
Awapuni North	9
Highbury	10

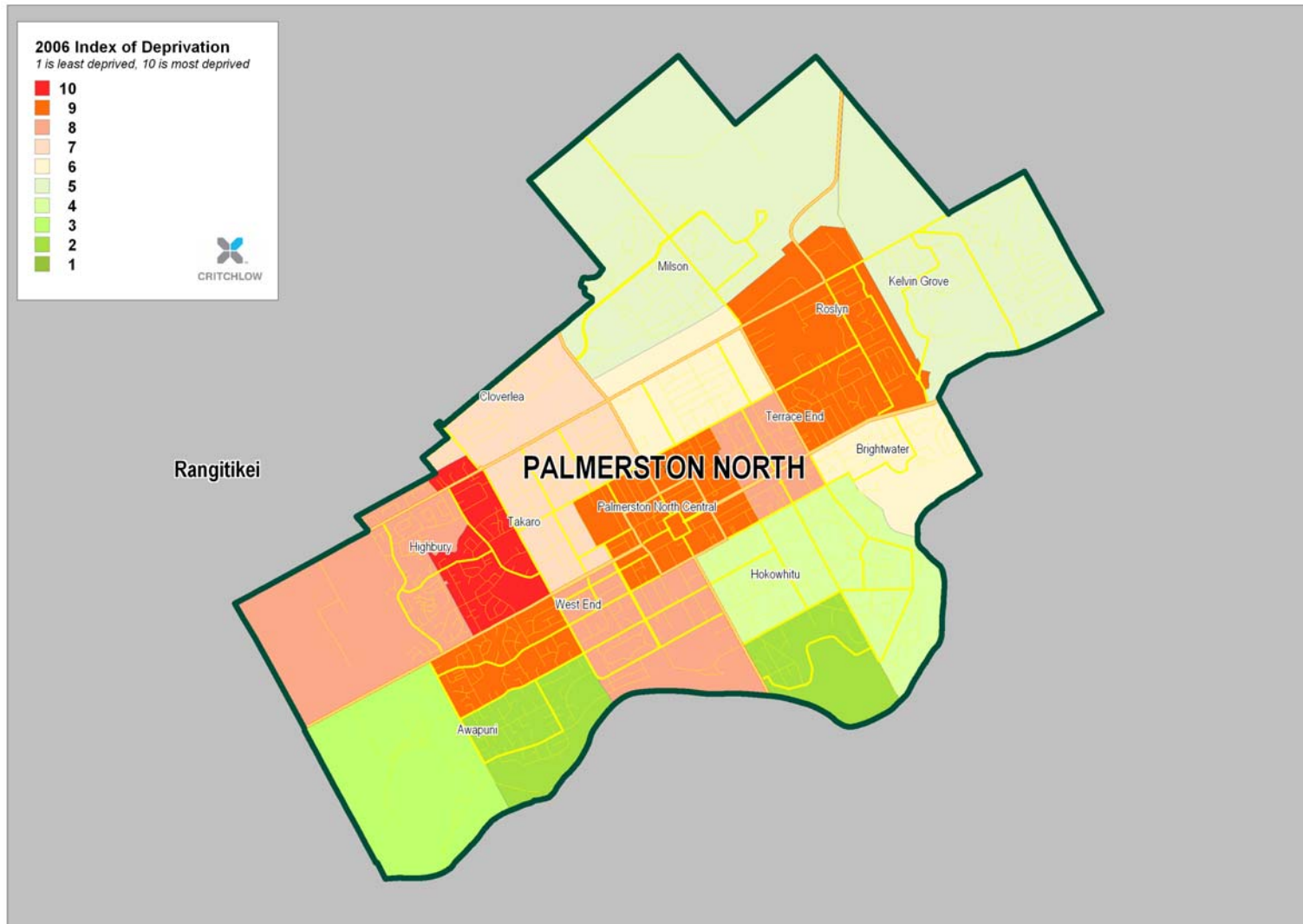
(1) The higher the Index of Deprivation (1 - 10), the more socioeconomically deprived an area is considered (see Glossary). Area Units do not correspond directly to Electorates, therefore only Area Units that are primarily within each Electorate are included.

Prepared from data published by the University of Otago, Wellington.

* Rank 1 (high) to 63 (low) among general electorates. Ranks are of % in each group. Some totals may differ due to rounding.

All tables prepared from Statistics New Zealand 2006 Census data, unless otherwise noted.

Index of Deprivation Map



Palmerston North: Work

Personal Income of the Population aged 15 years and over

	Palmerston North			New Zealand
	Number	%	Rank *	%
Nil or Loss	2,346	4.5	35	5.1
\$1-\$5,000	4,209	8.1	10	7.0
\$5,001-\$10,000	4,383	8.5	4	7.2
\$10,001-\$15,000	6,417	12.4	23	11.3
\$15,001-\$20,000	4,623	8.9	26	8.2
\$20,001-\$25,000	4,065	7.8	16	7.0
\$25,001-\$30,000	3,801	7.3	21	6.8
\$30,001-\$35,000	3,657	7.1	12	6.4
\$35,001-\$40,000	3,243	6.3	45	6.4
\$40,001-\$50,000	4,215	8.1	35	8.3
\$50,001-\$70,000	4,224	8.2	40	8.9
\$70,001-\$100,000	1,665	3.2	35	4.0
\$100,001+	1,095	2.1	48	3.3
Not Specified	3,855	7.4		10.2
Total	51,798	100.0		100.0
Median (\$)	22,500		50	

The median personal income for New Zealand as a whole is \$24,400.

Income Support Received by those aged 15 years and over

	Palmerston North			New Zealand
	Number	%	Rank *	%
NZ Superannuation or Veterans Pension	7,311	14.1	31	13.9
Unemployment Benefit	1,707	3.3	21	2.9
Sickness Benefit	1,161	2.2	33	2.2
Domestic Purposes Benefit	1,875	3.6	17	2.9
Invalids Benefit	1,605	3.1	14	2.4
Student Allowance	2,226	4.3	4	2.0
Other government benefits	1,821	3.5	5	3.0
No government benefit	44,181	85.3	49	87.3
Not specified	2,100	4.1		6.3
Total aged 15 and over	51,798	100.0		100.0

People reporting themselves in more than one category have been counted in each, so the sum of responses in the table may be greater than the number of people responding.

Labour Force and Employment Status of the Population aged 15 years and over

	Palmerston North			New Zealand
	Number	%	Rank *	%
Full-time Employed	25,101	48.5	37	48.4
Part-time Employed	8,229	15.9	8	14.4
Unemployed	1,995	3.9	19	3.4
Total Labour Force	35,325	68.2	18	66.2
Not in Labour Force	15,423	29.8	37	30.4
Labour Force Status Not Specified	1,053	2.0		3.4
Total Aged 15 Years and over	51,801	100.0		100.0
Employed				
- Paid Employee	27,540	53.2	6	47.9
- Employer	1,635	3.2	49	4.5
- Self-Employed, Not Employing	2,214	4.3	60	7.5
- Unpaid Worker in Family Business	336	0.6	57	1.3
- Employment Status Not Specified	1,719	3.3	4	1.8
- Total Gainfully Employed	33,330	64.3	27	62.8

Occupations of the Gainfully Employed

	Palmerston North			New Zealand
	Number	%	Rank *	%
Managers	4,083	12.3	58	17.1
Professionals	6,765	20.3	22	18.8
Technicians and Trades Workers	3,975	11.9	41	12.2
Community and Personal Service Workers	3,066	9.2	6	7.9
Clerical and Administrative Workers	4,263	12.8	26	12.1
Sales Workers	3,681	11.0	8	9.4
Machinery Operators and Drivers	1,899	5.7	35	5.8
Labourers	3,141	9.4	38	11.0
Not specified	2,460	7.4		5.7
Total	33,330	100.0		100.0

Business Locations by Industry at February 2006

	Business locations	People employed
Agriculture	111	180
Services to Agriculture; Hunting and Trapping	43	30
Forestry and Logging	17	3
Commercial Fishing	1	0
Other Mining	7	40
Food Beverage and Tobacco	20	570
Textile Clothing Footwear and Leather Mfg	28	280
Wood and Paper Product Manufacturing	26	230
Printing Publishing and Recorded Media	32	330
Petroleum Coal Chemical etc Manufacturing	28	220
Non-Metallic Mineral Product Manufacturing	11	75
Metal Product Manufacturing	65	490
Machinery and Equipment Manufacturing	105	750
Other Manufacturing	43	280
Electricity and Gas Supply	1	18
Water Supply Sewerage and Drainage Services	7	30
General Construction	188	1,310
Construction Trade Services	384	1,620
Basic Material Wholesaling	83	510
Machinery and Motor Vehicle Wholesaling	137	950
Personal and Household Good Wholesaling	130	1,010
Food Retailing	173	1,500
Personal and Household Good Retailing	398	2,440
Motor Vehicle Retailing and Services	247	1,230
Accommodation Cafes and Restaurants	202	2,230
Road Transport	142	630
Rail Transport	2	120
Air and Space Transport	10	90
Other Transport	6	6
Services to Transport	30	170
Storage	7	380
Communication Services	81	470
Finance	73	420
Insurance	18	240
Services to Finance and Insurance	67	160
Property Services	974	490
Business Services	553	3,500
Government Administration	26	1,320
Defence	3	15
Education	141	2,170
Health Services	247	4,710
Community Services	72	1,750
Motion Picture Radio and Television Services	8	90
Libraries Museums and the Arts	33	210
Sport and Recreation	105	600
Personal Services	178	630
Other Services	137	940
Total All Industry	5,400	35,430

These data are for the approximate electorate, to the nearest area unit. Included: enterprises having annual GST sales of \$30,000+ or other indicator of economic significance. Prepared from Stats NZ Business Demographic data.

Industries of the Gainfully Employed

	Palmerston North			New Zealand
	Number	%	Rank *	%
Agriculture, forestry and fishing	765	2.3	32	6.8
Mining	36	0.1	31	0.2
Manufacturing	2,799	8.4	53	11.0
Electricity, gas, water and waste services	126	0.4	45	0.5
Construction	2,262	6.8	44	7.5
Wholesale trade	1,728	5.2	31	5.0
Retail trade	3,939	11.8	2	9.9
Accommodation	1,926	5.8	23	5.6
Transport, postal and warehousing	1,152	3.5	45	4.1
Information media and telecommunications	372	1.1	42	1.9
Financial and insurance services	750	2.3	43	3.2
Rental, hiring and real estate services	798	2.4	45	2.7
Professional, scientific and technical services	2,088	6.3	35	7.8
Administrative and support services	1,104	3.3	34	3.3
Public administration and safety	2,124	6.4	8	4.1
Education and training	3,411	10.2	3	7.2
Health care and social assistance	3,390	10.2	9	8.1
Arts and recreation services	471	1.4	42	1.6
Other services	1,659	5.0	1	3.9
Not Elsewhere Included	2,430	7.3		5.6
Total	33,330	100.0		100.0

* Rank 1 (high) to 63 (low) among general electorates. Ranks are of % in each group. Some totals may differ due to rounding.

All tables prepared from Statistics New Zealand 2006 Census data, unless otherwise noted.

Glossary

Term	Meaning
Abbreviations	The party abbreviations for 2008 are: Aotearoa NZ Youth Party (ANYIPP), ACT New Zealand (ACT), Alliance (ALL), Aotearoa Legalise Cannabis Party (ALCP), Communist League (CL), Democrats for Social Credit (NZDSC), Direct Democracy Party (DDP), Family Party (FAM), Green Party (GP), Hapu Party (HP), Human Rights Party (HR), Independent (IND), Jim Anderton's Progressive (JAP), Kiwi Party (KIWI), Labour Party (LAB), Libertarianz (LIB), McGillicuddy Serious Party (McG), Māori Party (MAOR), National Party (NAT), New Zealand First Party (NZF), New Zealand Pacific Party (NZPP), New Zealand Representative Party (NZRP), No Commercial Airport at Whenuapai Airbase (NCAWAP), NZ Economic Euthenics (NZEE), RAM – Residents Action Movement (RAM), Restore All Things in Christ (RATC), The Bill and Ben Party (BB), The Republic of NZ Party (RONZP), United Future (UFNZ), Workers Party (WP).
-	The party abbreviations for 2005 are: 99 MP Party (99MP), ACT New Zealand (ACT), Alliance (ALL), Anti-Capitalist Alliance (ACA), Aotearoa Legalise Cannabis Party (ALCP), Christian Heritage NZ (CH), Communist League (CL), Democrats for Social Credit (DEM), Destiny New Zealand (DEST), Direct Democracy Party (DDP), Equal Values Party (EVP), Green Party (GRE), Human Rights (HR), Independent (IND), Jim Anderton's Progressive (JAP), Labour Party (LAB), Libertarianz (LIB), Māori Party (MP), National Party (NAT), New Zealand First Party (NZF), NZ Economic Euthenics (NZEE), NZ Family Rights Protection Party (NZFRP), NZ Republicans Party (NZREP), OneNZ Party (OneNZ), Rangitikei First (RF), Restore All Things in Christ (RATIC), The Republic of NZ Party (REP), United Future New Zealand (UF).
	The party abbreviations for 2002 are: ACT (ACT), Alliance (ALL), Anti-Capitalist Alliance (ACA), Aotearoa NZ Youth (ANZY), Aroha Ngia Tatou (ANT), Beneficiaries (BEN), Christian Heritage (CH), Communist League (CL), Green Party (GRE), Human Rights (HR), Independent (IND), Labour Party (LAB), Legalise Cannabis (LC), Libertarianz (LIB), MAI (MAI), Mana Maori (MM), Maori Party (MP), National Party (NAT), New Generation (NG), Nga Iwi Morehu (NIM), NMP (NMP), NZ Economic Euthenics (NZEE), NZ Equal Rights (NZER), NZ First (NZF), OneNZ Party (1NZ), Outdoor Rec. NZ (ORNZ), P.C.P Coalition (PCPC), Progressive Coalition (PC), Project Hope (PH), Quality of Life (QOL,) Reform's Tahī (RT), United Future (UF).
Area Units	Area Units are aggregations of meshblocks. They are non-administrative areas intermediate between meshblocks and territorial authorities. Area units of main or secondary urban areas generally coincide with suburbs or parts thereof. Area units within urban areas normally contain 3,000-5,000 population though this can vary due to such things as industrial areas, port areas, rural areas and so on within the urban area boundaries. In rural areas, the straddling of some territorial authorities over regional boundaries has resulted in a number of area units having only 2 or 3 meshblocks and a very low population count. (Statistics New Zealand).
Average	The sum of a list of numbers, divided by the total number of numbers in the list. Also called arithmetic mean.
Census usually resident population	Population as calculated on census night, the latest census figures being as at March 2006. The census usually resident population count is all people counted in New Zealand on census night excluding overseas visitors and New Zealand residents temporarily overseas.
Employment	Full-time employment is equal to people working 30 or more hours per week. Part-time employment is equal to people working 1-29 hours per week.
General electoral population	Total ordinarily resident population as shown in the census of population and dwellings, with the exception of the Māori electoral population.
Income	Includes income from all sources, including not only wages and salaries, but also other sources such as benefits, interest payments etc. Income figures given are for before tax (gross) income.
Index of Socioeconomic Deprivation	The Index of Deprivation (a number from 1 to 10) is high for an area with a high degree of socioeconomic "deprivation", and is low for an affluent or less needy area. In New Zealand as a whole, small areas are evenly divided among the ten deciles. The index is calculated from such factors as proportions of people dependent on benefits, unemployed, and living in a single-parent family, and proportions of households with income below a certain threshold, with no access to a telephone, and with no access to a car.

	For more information, see the NZDep2006 Index of Deprivation Research Report (http://www.wnmeds.ac.nz/academic/dph/research/socialindicators.html)
Māori electoral population	A figure representing both the persons registered as electors of the Māori electoral districts and a proportion of the persons of New Zealand Māori descent under the age of 18 years. The proportion is determined by dividing the total number of persons registered as electors of Māori electoral districts by the number of persons of New Zealand Māori descent registered.
Mean	The sum of a list of numbers, divided by the total number of numbers in the list. Also called arithmetic mean or average.
Median	Median is the "middle value" of a list. The smallest number such that at least half the numbers in the list are no greater than it. If the list has an odd number of entries, the median is the middle entry in the list after sorting the list into increasing order. If the list has an even number of entries, the median is equal to the sum of the two middle (after sorting) numbers divided by two.
Meshblock	The meshblock is the smallest geographic area used by Statistics New Zealand in the collection and/or processing of data. The meshblock is thus the building block for aggregation into larger areas such as area units and urban areas.
	Over time, the division of meshblocks and changes in population patterns have resulted in meshblock population counts having a considerable range. There are meshblocks with nil population and some with over 500 population. There are over 42,000 meshblocks across New Zealand. (Statistics New Zealand).
Quotas	The Electoral Act 1993 provides that the South Island has 16 General electoral districts. The General electoral population of the South Island is divided by 16 to give the South Island quota. The North Island General electoral population is then divided by the South Island quota to give the number of North Island General electoral districts. The North Island General electoral population is divided by the number of North Island General electorates to give the North Island quota. For the 2007 electorate boundaries, the South Island quota is 57,562 and the North Island quota is 57,243.
	In a similar way, the Māori electoral population is divided by the South Island quota and rounded to give the number of Māori electoral districts. The Māori electoral quota is the Māori electoral population divided by the number of Māori electoral districts. For the 2007 electorate boundaries, the Māori quota is 59,583. For both General and Māori electoral districts the Commission may allow the electoral population to vary from quota by up to plus or minus 5%.
Rounding	Census data have been randomly rounded to multiples of three to protect confidentiality. Individual figures may not add up to totals, and values for the same data may vary in different tables.
Suppression	Census data have been suppressed in areas containing less than six individuals. This affects data in the Household Composition, Labour Force and Employment Status, and Industries of the Gainfully Employed tables.
Total responses	Several census variables allow people to provide more than one response to the question. When a person has reported more than one response they will be counted in each group they reported. This means that the total population will be greater than the usual subject population for that variable, as individuals may be counted more than once.

Copyright - NZ Parliamentary Library

Any content published in this document may be reproduced and published without further licence or permission. This is subject to the material being reproduced accurately and not being used in a misleading context. Where the material is being published or issued to others, the source and copyright status must be acknowledged.