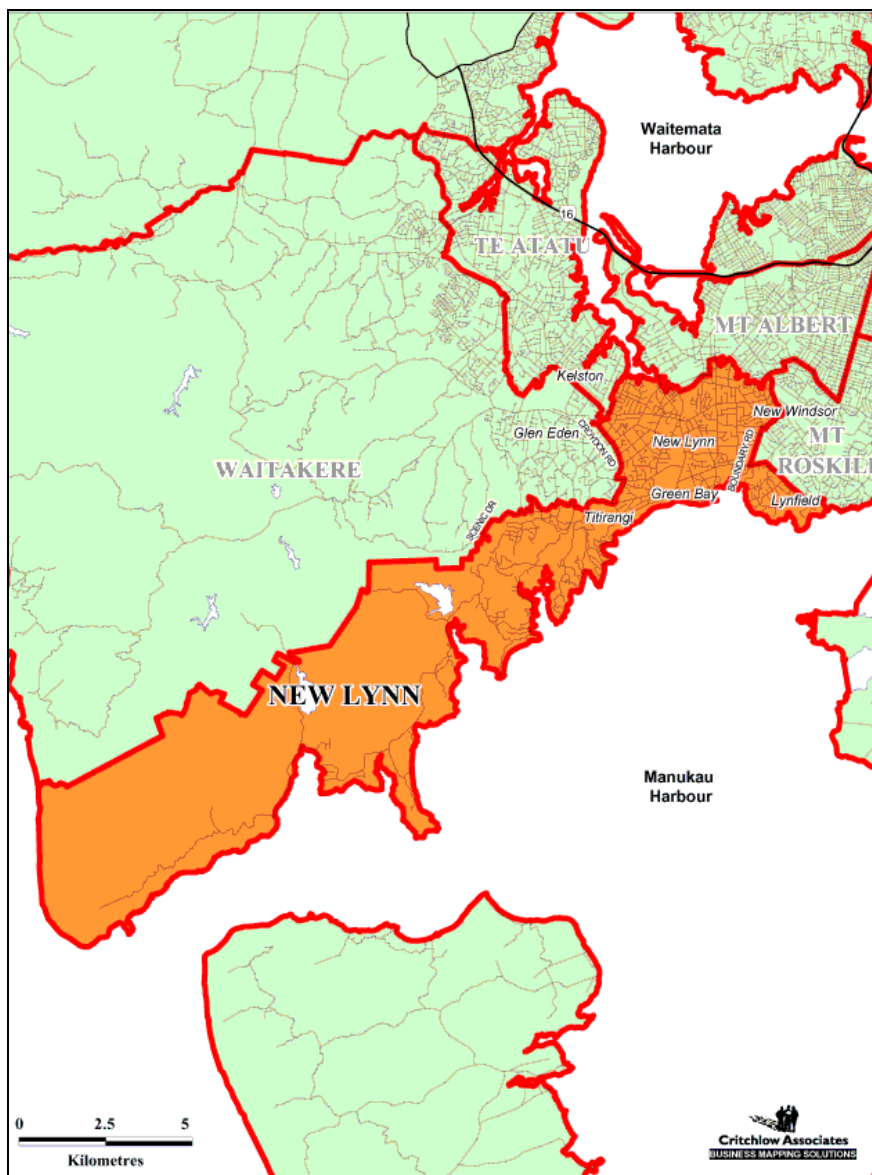


Electorate Profile

New Lynn



Parliamentary Library

Te Pātaka Rangahau a Te Whare Pāremata

October 2005

Table of Contents

Electoral Profile

General Notes	3
Election Results	3
2005 Election Results	3
Voter Enrolment and Turnout 2002, 2005	4
2002 Election Results	4
1999 Election Results	5

Statistical Profile

Population Summary	6
Age Groups of the Usually Resident Population	6
Ethnic Groups of the Usually Resident Population	6
Birthplace of Usually Resident New Zealand Population	7
Birthplace and Years Since Arrival in New Zealand, for Overseas Born	7
Languages Spoken	7
Highest Qualifications	8
Personal Income	8
Income Support Received	8
Labour Force and Employment Status	9
Occupations of the Gainfully Employed	9
Industries of the Gainfully Employed	10
Family Type of Families in Private Dwellings	11
Family Income	11
Social Marital Status	11
Household Composition of Private Dwellings	12
Access to Telecommunications	12
Tenure of Dwellings	12
Business Locations and People Employed by Industry	13
Socio-Economic Status Decile of Schools	14
Ethnic Group of School Pupils	14
Deprivation Index of Areas within the Electorate	15

Maps

Population Change 1996-2001	16
Average Personal Income 2001	17

Glossary

18

Electoral Profile

General Notes

Situated on the north-western side of the Manukau Harbour, New Lynn was created as a new electorate in 2002. It takes in parts formerly in Mt. Roskill, (Blockhouse Bay and Lynfield), and includes part of Titirangi, and New Windsor, which transferred from Mt Albert. The electorate comprises the communities of New Lynn, New Windsor, Blockhouse Bay, Green Bay, Waima, and Huia.

Of the resident population in 2001 over one third of the population had been born overseas compared to the national average of 18.7%. The Asian ethnic group comprised 19.4% of the resident population in 2001 – the second largest of any general electorate and above the national average of 6.2%. About 45% of those aged 15 or over were paid employees in 2001 – about the same proportion as in New Zealand overall.

Election Results

The winning candidate in the 2005 election, David Cunliffe (Labour Party), captured a majority (56.12%) of the 32,232 valid electorate votes cast for candidates in the New Lynn electorate. The seat was also won in 2002 by David Cunliffe (Labour Party) with a margin of 11,185. The Labour Party captured a plurality (49.09%) of the party votes in New Lynn, up about 0.5 percentage points on its party vote share in 2002. Turnout (total votes cast as a proportion of enrolled electors) in 2005 was 82.0%.

2005 Election Results – Ranked by Electorate Vote

Winning Candidate: CUNLIFFE, David (LAB) - Majority: 8078					
Electorate Votes			Party Votes		
Candidate	Valid Votes	Share (%)	Party	Valid Votes	Share (%)
CUNLIFFE, David	18,087	56.12	Labour Party	16,208	49.09
HARRIS, Mita	10,009	31.05	National Party	10,916	33.06
GREEN, Richard A	1,644	5.10	Green Party	1,850	5.60
DRAKE, Anne	943	2.93	United Future New Zealand	818	2.48
STEINIJANS, Barbara	701	2.17	ACT New Zealand	747	2.26
PENNEY, Karen	468	1.45	Destiny New Zealand	158	0.48
KAZEMI YAZDI, Seyed Mohammed	282	0.87	Jim Anderton's Progressive	407	1.23
BURCH, Gary	98	0.30	Direct Democracy Party	38	0.12
			New Zealand First Party	1,580	4.79
			Māori Party	128	0.39
			Christian Heritage NZ	56	0.17
			Aotearoa Legalise Cannabis Party	51	0.15
			Alliance	21	0.06
			Libertarianz	11	0.03
			99 MP Party	7	0.02
			NZ Family Rights Protection Party	7	0.02
			OneNZ Party	7	0.02
			Democrats for Social Credit	5	0.02
			The Republic of NZ Party	4	0.01
Total Valid Votes	32,232	100.00		33,019	100.00
Total Votes Cast	32,781			33,202	

Voter Enrolment and Turnout 2002, 2005

	New Lynn NZ		New Lynn NZ	
	2002		2005	
Voting Age Population (VAP) *	41,510	2,816,040	44,600	2,990,300
Electors on General Roll (EGR)	37,568	2,475,916	40,810	2,639,393
Electors on Maori Roll	1,457	194,114	1,485	208,003
Total Enrolled **	39,025	2,670,030	42,295	2,847,396
Total Votes Cast by EGR (TVC)	29,502	1,943,659	33,465	2,164,495
% VAP Enrolled	94.0%	94.8%	94.8%	95.2%
Turnout (TVC as % EGR)	78.5%	78.5%	82.0%	82.0%

* Estimated population statistics as at: June 2001; June 2005.

** Enrolment statistics as at: July 2002; 17 September 2005.

2002 Election Results – Ranked by Electorate Vote

Winning Candidate: CUNLIFFE, David Richard - majority 11185					
Electorate Votes			Party Votes		
Candidate	Valid Votes	Share (%)	Party	Valid Votes	Share (%)
CUNLIFFE, David Richard	16,687	58.82	Labour Party	14,128	48.49
BEACH, Brendan Carl	5,502	19.40	National Party	4,315	14.81
TOMS, Saffron	1,713	6.04	Green Party	2,087	7.16
WEST, Trevor	1,494	5.27	ACT	1,929	6.62
FELLNER, Susanne	1,471	5.19	United Future	2,109	7.24
JENKINS, Betty	635	2.24	Christian Heritage	440	1.51
HEHIR, Gerard	470	1.66	Alliance	405	1.39
MCCALLUM, Douglas	396	1.40	Progressive Coalition	485	1.66
			NZ First	2,949	10.12
			Outdoor Rec. NZ	175	0.60
			Legalise Cannabis	91	0.31
			OneNZ Party	11	0.04
			NMP	6	0.02
			Mana Maori	5	0.02
Total Valid Votes	28,368	100.00		29,135	100.00
Total Votes Cast	28,958			29,254	

1999 Election Results (Titirangi)

CUNLIFFE, David - Labour Party *majority* 5,800

Electorate Candidate	Party	Valid Votes	
ABEL, Stephen	Green Party	1576	5.36%
BELICH, Evana	Alliance	1449	4.93%
CUNLIFFE, David	Labour Party	14932	50.77%
DRAKE, Anne	Future New Zealand	207	0.70%
GILFILLAN, Graham	Republican Party	49	0.17%
HASLER, Marie	National Party	9132	31.05%
MORGAN, Kay Elizabeth	Natural Law Party	44	0.15%
MULLINS, Dawn	New Zealand First Party	539	1.83%
PECK, Grant	Christian Heritage Party	511	1.74%
SI'ULEPA, Peta	Mauri Pacific	226	0.77%
STEINIJANS, Barbara	ACT New Zealand	745	2.53%

Electorate Party for Titirangi	Valid Votes	
ACT New Zealand	2126	7.16%
Alliance	2394	8.07%
Green Party	1845	6.22%
Labour Party	13401	45.16%
National Party	7502	25.28%
New Zealand First Party	835	2.81%
United NZ	123	0.41%
Unsuccessful Parties	1451	4.89%

Statistical Profile

Population Summary

Usually Resident Population 2001 Census	54,981
Usually Resident Population 1996 Census	50,919
Increase 1996-2001	4,062
Percentage Increase 1996-2001	8.0
Percentage Increase 1996-2001, Total New Zealand	3.3

Age Groups of the Usually Resident Population

Age Group	New Lynn			New Zealand
	Number	%	Rank *	%
under 5 yrs	4,122	7.5	38	7.2
5-14 yrs	8,034	14.6	20	15.4
15-19 yrs	3,867	7.0	32	7.1
20-29 yrs	7,116	12.9	40	13.0
30-49 yrs	17,532	31.9	54	29.8
50-64 yrs	7,989	14.5	20	15.3
65 yrs and over	6,297	11.5	26	12.1
Total	54,957	100.0		100.0
Mean Age (years)	34.6		30	35.8
	Number	%		%
Total 18 years and over	40,611	73.9		73.0
Total Males	26,685	48.6		48.8
Total Females	28,272	51.4		51.2

Ethnic Groups of the Usually Resident Population

Ethnic Group (total responses)	New Lynn			New Zealand
	Number	%	Rank *	%
European	35,253	64.1	10	76.8
NZ Maori	4,341	7.9	18	14.1
Pacific Island	6,072	11.0	52	6.2
Asian	10,665	19.4	61	6.4
Other	921	1.7	57	0.7
Not Specified	2,388	4.3		4.0
Total**	59,640	108.5		108.2

* Rank 1 (low) to 62 (high) among general electorates. Ranks are of % in each group. Some totals may differ due to rounding. Electorates are compiled from Meshblocks, each of whose data is rounded to a multiple of 3 (to protect confidentiality).

** The sum of numbers in each ethnic group is greater than the total population because people with more than one ethnicity are counted in each group they belong to. Prepared in the Parliamentary Library from Statistics New Zealand 2001 Census data.

Birthplace of Usually Resident New Zealand Population

	New Lynn			New Zealand
	Number	%	Rank*	%
New Zealand	33,630	61.2	8	77.4
Overseas	19,047	34.7	56	18.7
Not Specified	2,274	4.1		4.0
Total Usually Resident Population	54,951	100.0		100.0

Birthplace and Years Since Arrival in New Zealand, for Overseas Born

	New Lynn			New Zealand
	Number	%	Rank*	%
<u>UK and Ireland</u>				
0 and under 5 Years	381	2.0	7	3.5
5 and under 10 Years	279	1.5	8	2.2
10 and under 20 Years	501	2.6	9	3.3
20 Years and over	2,877	15.1	9	22.1
Total UK and Ireland	4,179	21.9	9	32.2
<u>Pacific Islands</u>				
0 and under 5 Years	954	5.0	53	3.5
5 and under 10 Years	507	2.7	54	1.6
10 and under 20 Years	1,371	7.2	54	4.7
20 Years and over	1,113	5.8	46	5.1
Total Pacific Islands	4,263	22.3	53	16.9
<u>North East Asia ⁽¹⁾</u>				
0 and under 5 Years	2,187	11.5	55	6.3
5 and under 10 Years	882	4.6	50	3.7
10 and under 20 Years	393	2.1	54	1.5
20 Years and over	102	0.5	33	0.6
Total North East Asia	3,735	19.6	54	12.8
<u>Total Overseas Born</u>				
0 and under 5 Years	6,240	32.7	52	26.0
5 and under 10 Years	2,949	15.5	51	13.8
10 and under 20 Years	3,396	17.8	52	16.1
20 Years and over	5,544	29.0	10	38.5
Total Overseas Born	19,086	100.0		100.0

Languages spoken

	New Lynn			New Zealand
	Number	%	Rank*	%
English Only	35,670	64.9	8	76.8
English and NZ Maori	708	1.3	13	3.5
NZ Maori Only	33	0.1	18	0.2
Maori, English and Other	234	0.4	22	0.6
Maori and Other	3	0.0	19	0.0
English and Other	11,940	21.7	57	10.8
Other language	2,316	4.2	57	1.5
No Language	1,260	2.3	50	2.0
Language Not Specified	2,817	5.1		4.6
Total	54,981	100.0		100.0

* Rank 1 (low) to 62 (high) among the General Electorates. Ranks are of % in each group.

Some totals may differ due to rounding. Electorates are compiled from Meshblocks, each of whose data is rounded to a multiple of 3 (to protect confidentiality).

(1) North East Asia includes China, Korea, Taiwan, Hong Kong, Japan.

Prepared in the Parliamentary Library from Statistics New Zealand 2001 Census data.

Highest Qualifications of the Population aged 15 years and over

	New Lynn			New Zealand
	Number	%	Rank*	%
Higher Degree	1,593	3.7	45	3.2
Bachelor Degree	3,600	8.4	44	6.9
Advanced Vocational Qualification	3,195	7.5	38	7.2
Intermediate Vocational Qualification	717	1.7	14	1.9
Skilled Vocational Qualification	1,698	4.0	12	4.8
Basic Vocational Qualification	1,527	3.6	27	3.7
Higher School Qualification	2,313	5.4	40	5.4
Sixth Form Qualification	4,095	9.6	24	9.8
Fifth Form Qualification	5,115	12.0	16	13.5
Other NZ Secondary School Qual.	48	0.1	50	0.1
Overseas Secondary School Qual.	4,719	11.0	57	5.7
No Qualification	8,262	19.3	16	23.7
Highest Qualification Not Specified	5,907	13.8		14.1
Total	42,789	100.0		100.0

Personal Income of the Population aged 15 years and over

	New Lynn			New Zealand
	Number	%	Rank*	%
Nil or loss	2,865	6.7	58	4.8
\$1 to \$5,000	3,501	8.2	35	8.3
\$5,001 to \$10,000	4,563	10.7	20	11.7
\$10,001 to \$15,000	5,289	12.4	24	13.7
\$15,001 to \$20,000	3,096	7.2	14	8.4
\$20,001 to \$25,000	2,829	6.6	18	7.2
\$25,001 to \$30,000	3,012	7.0	17	7.4
\$30,001 to \$40,000	4,956	11.6	44	10.8
\$40,001 to \$50,000	3,087	7.2	47	6.3
\$50,001 to \$70,000	2,736	6.4	43	5.7
\$70,001 to \$100,000	1,083	2.5	42	2.4
\$100,001 or More	636	1.5	26	2.2
Not Specified	5,151	12.0		11.1
Total	42,801	100.0		100.0
Average Personal Income	\$24,942		36	\$25,371

Income Support Received by those aged 15 years and over (total responses)

	New Lynn			New Zealand
	Number	%	Rank*	%
ACC Regular Payments	438	1.0	12	1.5
National Superannuation	5,475	12.8	24	14.5
Other Superannuation	1,005	2.3	15	3.1
Community wage job seeker	2,136	5.0	17	6.2
Community wage sickness benefit	903	2.1	51	1.9
Domestic Purposes Benefit	1,287	3.0	22	3.7
Invalid's Benefit	729	1.7	15	2.3
Student Allowance	1,119	2.6	44	2.7
Other Government Benefits	1,764	4.1	42	3.8
Total Aged 15 years and over	42,801	100.0		100.0

* Rank 1 (low) to 62 (high) among general electorates. Ranks are of % in each group. Some totals may differ due to rounding. Electorates are compiled from Meshblocks, each of whose data is rounded to a multiple of 3 (to protect confidentiality). Prepared in the Parliamentary Library from Statistics New Zealand 2001 Census data.

Labour Force and Employment Status of the Population aged 15 years and over

	New Lynn			New Zealand
	Number	%	Rank*	%
Full-time Employed	19,578	45.7	28	46.0
Part-time Employed	5,457	12.7	11	13.8
Unemployed	2,148	5.0	36	4.8
Total Labour Force	27,189	63.5	22	64.6
Not in Labour Force	14,190	33.2	39	32.3
Labour Force Status Not Specified	1,383	3.2		3.1
Total Aged 15 Years and over	42,801	100.0		100.0
Paid Employee	19,323	45.1	31	44.9
Employer	1,353	3.2	13	4.5
Self-Employed, Not Employing	3,243	7.6	37	7.4
Unpaid Worker in Family Business	339	0.8	23	1.4
Employment Status Not Specified	783	1.8		1.7
Total Gainfully Employed	25,041	58.5	26	59.8

Occupations of the Gainfully Employed aged 15 years and over

	New Lynn			New Zealand
	Number	%	Rank*	%
Legislators and Administrators and Managers	3,387	13.5	44	12.5
Professionals	3,930	15.7	45	13.9
Technicians and Associate Professionals	3,312	13.2	48	11.0
Clerks	4,002	16.0	54	12.5
Service and Sales Workers	3,282	13.1	21	14.0
Agriculture and Fishery Workers	312	1.2	13	8.0
Trades Workers	2,484	9.9	49	8.4
Plant and Machine Operators and Assemblers	1,674	6.7	20	8.3
Elementary Occupations	1,266	5.1	23	5.8
Not Specified	1,392	5.6		5.5
Total	25,041	100.0		100.0

* Rank 1 (low) to 62 (high) among the General Electorates. Ranks are of % in each group. Some totals may differ due to rounding. Electorates are compiled from Meshblocks, each of whose data is rounded to a multiple of 3 (to protect confidentiality).

Prepared in the Parliamentary Library from Statistics New Zealand 2001 Census data.

Industries of the Gainfully Employed aged 15 years and over

	New Lynn			New Zealand
	Number	%	Rank *	%
Agriculture, Forestry and Fishing	132	0.5	9	8.3
Mining	6	0.0	7	0.2
Manufacturing	3,546	14.2	41	13.0
Electricity, Gas and Water Supply	87	0.3	38	0.3
Construction	1,698	6.8	45	6.0
Wholesale Trade	2,016	8.1	51	5.8
Retail Trade	3,108	12.4	35	12.1
Accommodation, Cafes and Restaurants	897	3.6	14	4.7
Transport and Storage	1,077	4.3	45	3.8
Communication Services	504	2.0	51	1.3
Finance and Insurance	978	3.9	48	3.0
Property and Business Services	3,471	13.9	45	11.3
Government Administration and Defence	558	2.2	22	3.5
Education	1,941	7.8	44	7.3
Health and Community Services	1,938	7.7	31	8.1
Cultural and Recreational Services	684	2.7	50	2.4
Personal and other Services	999	4.0	42	3.7
Not Specified	1,392	5.6		5.3
Total	25,038	100.0		100.0

* Rank 1 (low) to 62 (high) among general electorates. Ranks are of % in each group. Some totals may differ due to rounding. Electorates are compiled from Meshblocks, each of whose data is rounded to a multiple of 3 (to protect confidentiality).

Prepared in the Parliamentary Library from Statistics New Zealand 2001 Census data.

Family Type of Families in Private Dwellings

	New Lynn			New Zealand
	Number	%	Rank*	%
Couple Only	4,899	34.4	10	39.0
Two Parent Family	6,627	46.5	52	42.1
One Parent Family	2,718	19.1	32	18.9
Total	14,244	100.0		100.0

Family Income

	New Lynn			New Zealand
	Number	%	Rank*	%
Loss or Zero	156	1.1	54	0.7
1 to 5000	234	1.6	54	1.2
5001 to 10000	216	1.5	48	1.3
10001 to 15000	513	3.6	26	4.0
15001 to 20000	909	6.3	23	7.0
20001 to 25000	537	3.8	23	4.2
25001 to 30000	1,101	7.7	25	8.7
30001 to 40000	1,107	7.7	20	9.0
40001 to 50000	1,272	8.9	22	9.7
50001 to 70000	2,400	16.8	36	16.2
70001 to 100000	1,911	13.3	48	11.0
100001 or More	1,575	11.0	42	10.9
Income Not Specified	2,385	16.7		16.1
Total Families	14,316	100.0		100.0
Average Family Income	\$55,855		42	\$54,224

Social Marital Status of People Aged 15 years and over

	New Lynn			New Zealand
	Number	%	Rank*	%
Married	20,097	47.0	32	45.2
Other partnerships	3,888	9.1	11	11.6
Total Partnerships	23,985	56.0	23	56.9
Non Partnered	16,095	37.6	40	36.7
Social Marital Not Specified	2,721	6.4		6.4
Total Aged 15 Years and over	42,801	100.0		100.0

* Rank 1 (low) to 62 (high) among the General Electorates. Ranks are of % in each group. Some totals may differ due to rounding. Electorates are compiled from Meshblocks, each of whose data is rounded to a multiple of 3 (to protect confidentiality). Prepared in the Parliamentary Library from Statistics New Zealand 2001 Census data.

Household Composition of Private Dwellings

	New Lynn			New Zealand
	Number	%	Rank*	%
One Family	12,780	67.0	20	67.6
Two Families	681	3.6	56	2.0
Three or More Families	48	0.3	53	0.1
Non-Family Household	969	5.1	44	5.2
One Person Household	4,131	21.6	21	22.9
Not Available	474	2.5		2.1
Total Households	19,083	100.0		100.0

Access to Telecommunications

	New Lynn			New Zealand
	Number	%	Rank*	%
Access to a Telephone	17,733	92.9	27	92.3
Access to a Fax Machine	4,842	25.4	41	24.2
Access to the Internet	7,824	41.0	45	35.9
No Access to Telecommunications Systems	441	2.3	16	3.5
Access to Telecommunications Not Specified	840	4.4		4.1
Total Households	19,083	100.0		100.0

Tenure of Dwellings

	New Lynn			New Zealand
	Number	%	Rank*	%
Owned, With or Without Mortgage	12,513	65.6	29	64.6
Not Owned	5,541	29.0	32	30.7
of which Paying Rent to Private Sector Landlord	3,606	18.9	40	18.7
of which Paying Rent to Other Landlord	1,014	5.3	30	6.4
of which Paying Rent, Landlord Sector unknown	321	1.7		1.6
Tenure Not Specified	957	5.0		4.7
Total Households	19,083	100.0		100.0

* Rank 1 (low) to 62 (high) among general electorates. Ranks are of % in each group. Some totals may differ due to rounding. Electorates are compiled from Meshblocks, each of whose data is rounded to a multiple of 3 (to protect confidentiality). Prepared in the Parliamentary Library from Statistics New Zealand 2001 Census data.

**Business Locations and People Employed by Industry at February 2004
in the Approximate Electorate Area**

	New Lynn Number of business locations	Number of people employed
Agriculture	10	12
Services to Agriculture; Hunting and Trapping	4	12
Forestry and Logging	5	0
Commercial Fishing	1	0
Coal Mining	0	0
Oil and Gas Extraction	0	0
Metal Ore Mining	0	0
Other Mining	1	9
Services to Mining	0	0
Food, Beverage and Tobacco	15	210
Textile, Clothing, Footwear and Leather Manufacturing	40	670
Wood and Paper Product Manufacturing	12	260
Printing, Publishing and Recorded Media	30	130
Petroleum, Coal, Chemical and Associated Product Manufacturing	14	190
Non-Metallic Mineral Product Manufacturing	10	75
Metal Product Manufacturing	54	330
Machinery and Equipment Manufacturing	76	240
Other Manufacturing	60	180
Electricity and Gas Supply	0	0
Water Supply, Sewerage and Drainage Services	5	15
General Construction	191	150
Construction Trade Services	438	660
Basic Material Wholesaling	38	330
Machinery and Motor Vehicle Wholesaling	72	260
Personal and Household Good Wholesaling	136	270
Food Retailing	144	1,130
Personal and Household Good Retailing	273	1,130
Motor Vehicle Retailing and Services	177	470
Accommodation, Cafes and Restaurants	74	510
Road Transport	136	80
Rail Transport	0	0
Water Transport	3	0
Air and Space Transport	1	0
Other Transport	7	6
Services to Transport	32	80
Storage	1	0
Communication Services	55	100
Finance	42	250
Insurance	7	15
Services to Finance and Insurance	31	35
Property Services	550	170
Business Services	685	700
Government Administration	3	65
Defence	0	0
Education	75	890
Health Services	117	290
Community Services	27	460
Motion Picture, Radio and Television Services	39	3
Libraries, Museums and the Arts	59	85
Sport and Recreation	43	230
Personal Services	133	240
Other Services	45	85
Private Households Employing Staff	0	0
Total	3,971	11,050

These data are for the approximate electorate, to the nearest census area unit.

Included: enterprises having annual GST sales of \$30,000+ or other indicator of economic significance.

Prepared in the Parliamentary Library from Statistics New Zealand Business Demographic data.

Socio-Economic Status Decile of Schools in the Electorate, July 2004

Decile	Number of Schools	New Lynn			New Zealand	
		%	Number of Pupils	%	% of Schools	% of Pupils
1		0.0		0.0	10.4	7.6
2	2	9.5	552	7.8	9.5	7.8
3	3	14.3	546	7.8	9.3	8.0
4	2	9.5	321	4.6	9.6	9.5
5	2	9.5	1,147	16.3	9.6	10.4
6	1	4.8	575	8.2	9.5	9.3
7	2	9.5	1,252	17.8	9.7	10.5
8	4	19.0	1,982	28.1	8.9	8.8
9	1	4.8	177	2.5	9.7	10.2
10		0.0		0.0	9.5	13.0
Not allocated	4	19.0	492	7.0	4.3	5.0
Total	21	100.0	7,044	100.0	100.0	100.0

Average school decile (weighted by number of pupils)

6.0

5.9

Decile 10 is the highest socio-economic status.

Ethnic Group or Foreign Fee Paying Status of School Pupils in the Electorate, July 2004

	New Lynn		New Zealand
	Number of Pupils	%	%
NZ European	3,281	46.6	59.2
NZ Maori	803	11.4	20.9
Pacific Peoples	1,029	14.6	8.5
Asian	1,466	20.8	7.8
Other	315	4.5	1.7
Foreign Fee Paying	150	2.1	1.9
MFAT	0	0.0	0.0
Total	7,044	100.0	100.0

Prepared in the Parliamentary Library from Ministry of Education data.

Deprivation Index for Census Area Units in the Electorate New Lynn

Census Area Unit	Deprivation Index ¹
Titirangi South	1
Waima	1
Otimai	1
Laingholm	2
Konini	3
Kaurilands	3
Crum Park	3
Lynfield South	3
Waikowhai West	3
Armour Bay	4
Karekare	4
Blockhouse Bay	4
Green Bay	5
New Windsor	6
Avondale South	6
Roberton	8
Glen Eden East	8
Rewarewa	8
Fruitvale	8
Owairaka West	9
New Lynn North	9
Glenavon	9
Manukau Harbour	
Oceanic-Auckland Region	
West	
Inlet-Waitemata Harbour	

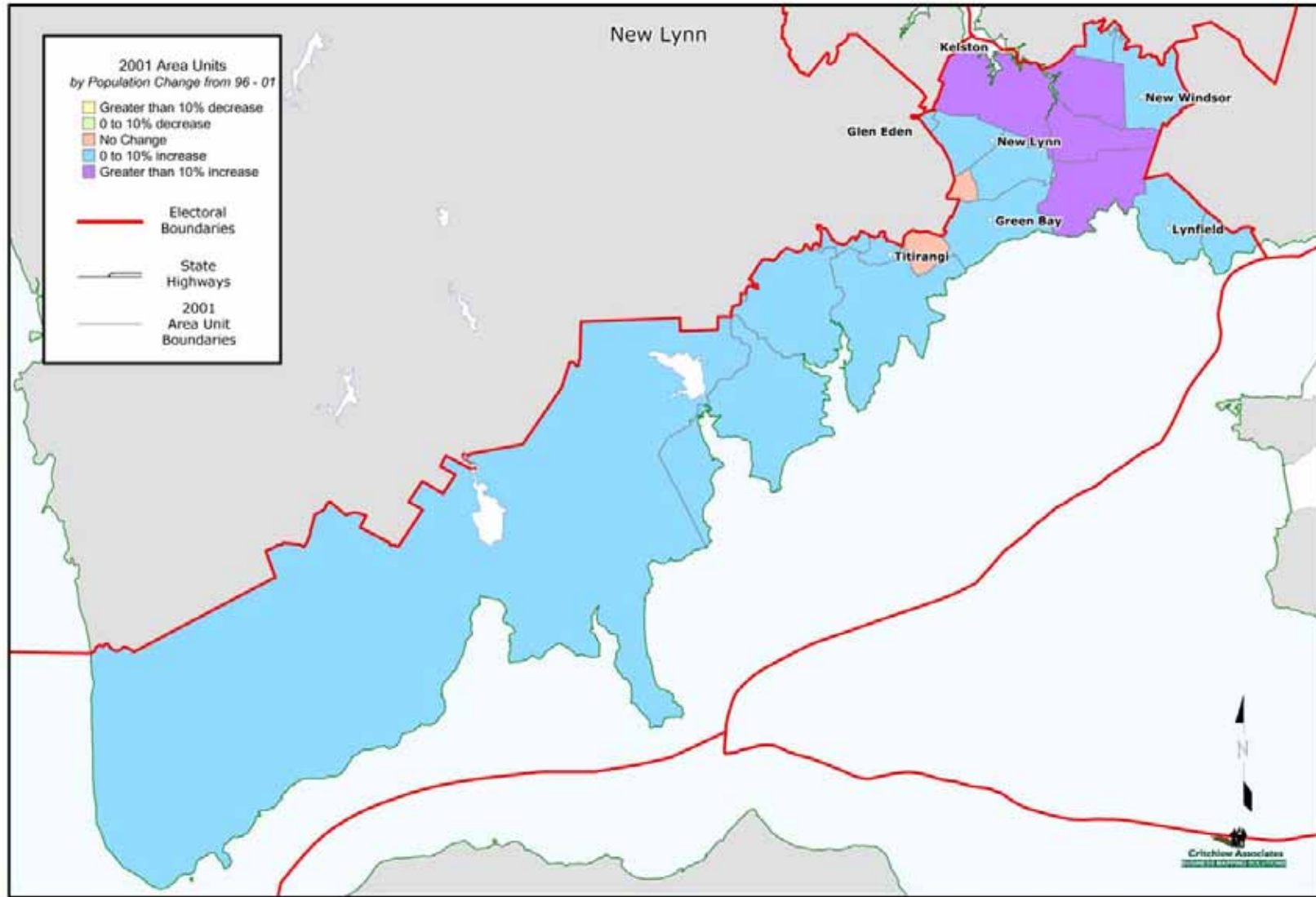
1. The Deprivation Index (a number from 1 to 10) is high for an area with a high degree of "deprivation", and is low for an affluent or less needy area. In New Zealand as a whole, small areas are evenly divided among the ten deciles. The deprivation index is calculated from such factors as proportions of people dependent on benefits, unemployed, and living in a single-parent family, and proportions of households with income below a certain threshold, with no access to a phone, and with no access to a car.

See Degrees of Deprivation in New Zealand: An Atlas of Socioeconomic Difference 2nd Edition, by Crampton, Salmond and Kirkpatrick.

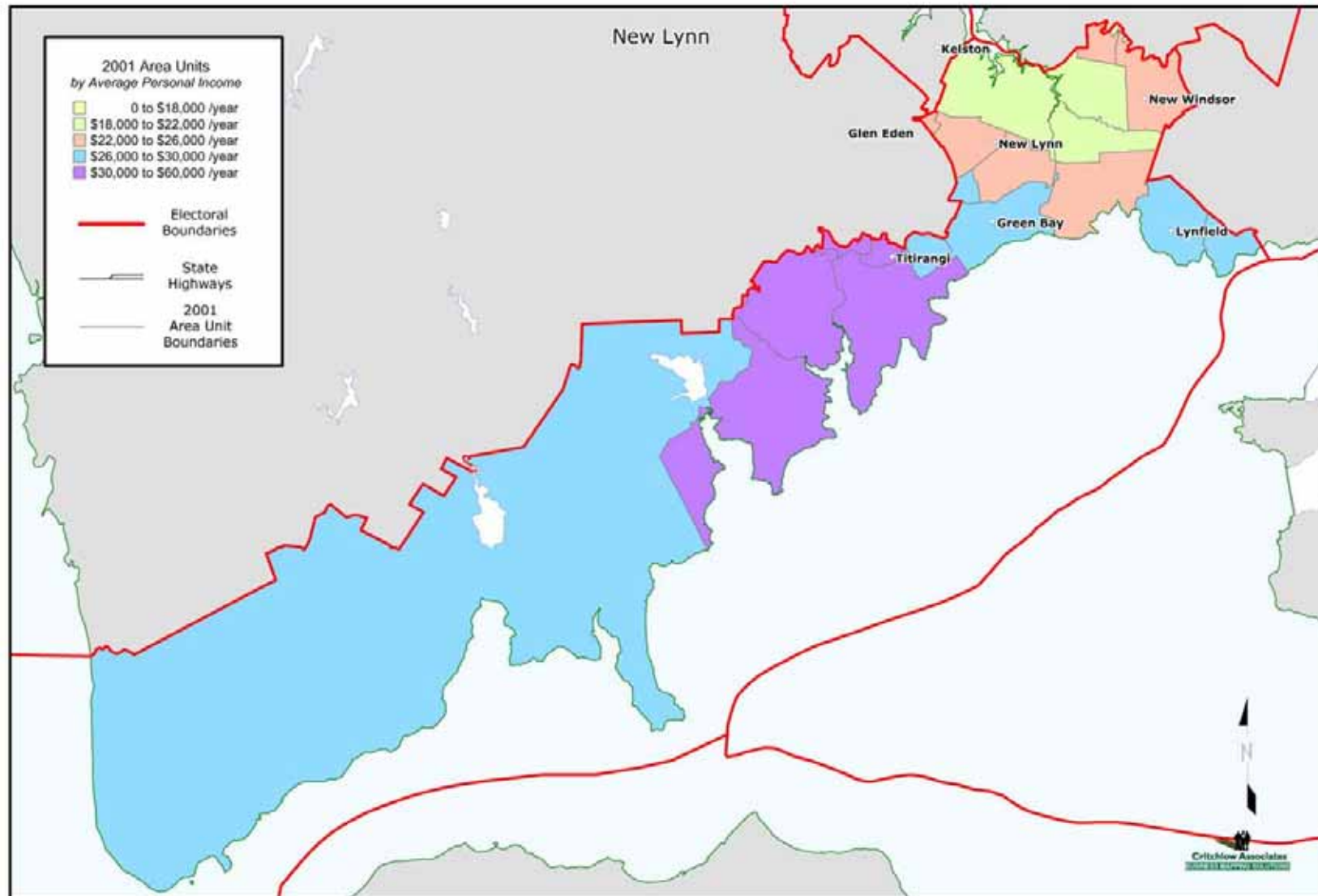
Prepared in the Parliamentary Library from Ministry of Health data.

Maps

Population Change 1996-2001



Average Personal Income 2001



Glossary

Term	Meaning
Area Unit	Area Units are aggregations of meshblocks. They are non-administrative areas intermediate between meshblocks and territorial authorities. Area units of main or secondary urban areas generally coincide with suburbs or parts thereof. Area units within urban areas normally contain 3,000-5,000 population though this can vary due to such things as industrial areas, port areas, rural areas and so on within the urban area boundaries. In rural areas, the straddling of some territorial authorities over regional boundaries has resulted in a number of area units having only 2 or 3 meshblocks and a very low population count. (Statistics New Zealand).
Average	The sum of a list of numbers, divided by the total number of numbers in the list. Also called arithmetic mean.
Census usually resident population	Population as calculated on census night, the latest census figures being as at March 2001. The census usually resident population count is all people counted in New Zealand on census night excluding overseas visitors and New Zealand residents temporarily overseas. At a sub-national level, the census usually resident population count refers to people who usually reside in a given subject area. The census usually resident population count is obtained by relocating people who are normally resident in an area of New Zealand, but who were enumerated elsewhere in New Zealand on census night, back to the meshblock of their usual address. For example, if a person usually lives in Christchurch but was in Wellington on census night, they will be included in the census usually resident population count for Christchurch and the census night population count for Wellington.
General electoral population	Total ordinarily resident population as shown in the census of population and dwellings, with the exception of the Maori electoral population.
Income	Includes income from all sources, including not only wages and salaries, but also other sources such as benefits, interest payments etc.
Maori electoral population	A figure representing both the persons registered as electors of the Maori electoral districts and a proportion of the persons of New Zealand Maori descent under the age of 18 years. The proportion is determined by dividing the total number of persons registered as electors of Maori electoral districts by the number of persons of New Zealand Maori descent registered.
Mean	The sum of a list of numbers, divided by the total number of numbers in the list. Also called arithmetic mean or average.
Median	Median is the "middle value" of a list. The smallest number such that at least half the numbers in the list are no greater than it. If the list has an odd number of entries, the median is the middle entry in the list after sorting the list into increasing order. If the list has an even number of entries, the median is equal to the sum of the two middle (after sorting) numbers divided by two.
Meshblock	The meshblock is the smallest geographic area used by Statistics New

Zealand in the collection and/or processing of data. The meshblock is thus the building block for aggregation into larger areas such as area units and urban areas.

Over time, the division of meshblocks and changes in population patterns have resulted in meshblock population counts having a considerable range. There are meshblocks with nil population and some with over 500 population. There are over 38,000 meshblocks across New Zealand. (Statistics New Zealand).

Quotas

The Electoral Act 1993 provides that the South Island has 16 General electoral districts. The General electoral population of the South Island is divided by 16 to give the South Island quota. The North Island General electoral population is then divided by the South Island quota to give the number of North Island General electoral districts. The North Island General electoral population is divided by the number of North Island General electorates to give the North Island quota. For the 2002 election, the South Island quota is 54,308 and the North Island quota is 54,288.

In a similar way, the Maori electoral population is divided by the South Island quota and rounded to give the number of Maori electoral districts. The Maori electoral quota is the Maori electoral population divided by the number of Maori electoral districts. For the 2002 election, the Maori quota is 53,130. For both General and Maori electoral districts the Commission may allow the electoral population to vary from quota by up to plus or minus 5%.

Total responses

Several census variables allow people to provide more than one response to the question. When a person has reported more than one response they will be counted in each group they reported. In output tables this is presented as 'total responses', for example, ethnic group (total responses). This means that the total population will be greater than the usual subject population for that variable, as individuals may be counted more than once.

Variables that may be output on the basis of total responses are:

- ethnic group
- language spoken
- iwi
- religious affiliation
- sources of personal income
- job search methods
- unpaid activities
- sources of family income
- sources of extended family income
- sources of household income
- fuel type used to heat dwellings
- access to telecommunication systems.

Multiple responses may also be reported as a combination of response categories. For example, for outputs of ethnic group, categories may include European/Maori, Maori/Pacific peoples, etc.

Copyright © NZ Parliamentary Library

Except for educational purposes permitted under the Copyright Act 1994, no part of this document may be reproduced or transmitted in any form or by any means, including information storage and retrieval systems, other than by Members of Parliament in the course of their official duties, without the consent of the Parliamentary Librarian, Parliament Buildings, Wellington, New Zealand.